

**NORTH AMERICAN WETLANDS CONSERVATION ACT PROPOSAL**

**PROJECT OFFICER'S PAGE**

**What is the proposal title?** Coastal SC Focus Areas Protection I

**What is the date you are submitting the proposal?** February 27, 2015

**What are the geographical landmarks for the proposal?**

1. State(s): South Carolina
2. County(ies): Beaufort, Berkeley, Charleston, Clarendon, Colleton, Darlington, Dillon, Dorchester, Florence, Georgetown, Hampton, Horry, Jasper, Lee, Marion, Marlboro, Sumter, Williamsburg.
3. Congressional District(s): 1, 2, 5 and 6
4. JV: Atlantic Coast Joint Venture
5. BCR: 27

**Project Officer information:**

1. Name: *David Bishop*
2. Title: *ACE Basin and Southern Lowcountry Project Director*
3. Organization: *The Nature Conservancy*
4. Address: *1417 Stuart Engals Blvd, Mount Pleasant, SC 29464*
5. Telephone number: *843.937.8807 x 13*
6. Electronic mail address: *dbishop@tnc.org*
7. Grantee organization or proposal website, if available: *www.nature.org*

**Are you requesting that this proposal be considered for funding using BP Gulf Spill funds?** *No*

**Is an Optional Matching Contributions Plan (MCP) submitted with the proposal?** *Yes*    **Or**  
**Does the proposal contain match associated with a previously submitted MCP?** *No*

**Are you requesting that this proposal be considered as a continuation of a previous grant agreement (a Programmatic Project Proposal)?** *No*

**Do you expect this project to be the first phase of a Programmatic Project?** *No*

**How many more proposals are planned for the same project area?** *3 projects associated with the proposed MCP*

**Will any of the NAWCA funds requested as part of this proposal be received or spent by the U.S. Fish and Wildlife Service or another Federal agency?** *No*

If yes, which agency(ies) will receive these funds and what is the fund amount:

Agency \_\_\_\_\_ Amount \_\_\_\_\_

FWS Station Cost/ Fund Center \_\_\_\_\_

**Are carbon sequestration credits involved in the proposal?** *No*

**Will any portion of any tract or activities associated with any tract be used to satisfy wetland or habitat mitigation requirements under Clean Water Act, Rivers and Harbors Act, Fish and Wildlife Coordination Act, Water Resources Development Act, or other related statutes now or in the future?** *No*

**Have you confirmed that all partners, key personnel, and contractors are eligible to participate in**

**Federal grants?** *Yes*

**To ensure that the proposal complies with available guidelines and that partners are aware of their responsibilities, the Project Officer certifies to the following statement:** I have read the 2015 standard grant instructions, eligibility information, and grant administration policies and informed partners or partners have read the material themselves. To the best of my knowledge, the proposal is eligible and complies with all NAWCA, North American Wetlands Conservation Council, and Federal grant guidelines. The work in this proposal consists of work and costs associated with long-term wetlands and migratory bird habitat conservation.

**Do you have any comments about, or suggestions for, the NAWCA program?** *No*

NORTH AMERICAN WETLANDS CONSERVATION ACT PROPOSAL SUMMARY  
Coastal SC Focus Areas Protection I

COUNTY(IES), STATE(S), CONGRESSIONAL DISTRICT(S): South Carolina counties include: Beaufort, Berkeley, Charleston, Clarendon, Colleton, Darlington, Dillon, Dorchester, Florence, Georgetown, Hampton, Horry, Jasper, Lee, Marion, Marlboro, Sumter, Williamsburg; Congressional District(s): 1, 2, 5 and 6

GRANT AMOUNT		\$ 1,000,000
Allocation: SC Department of Natural Resources	\$ 540,500	
The Nature Conservancy	\$ 459,500	
MATCHING PARTNERS		\$ 2,003,500
The Nature Conservancy	\$ 359,055	
South Carolina Conservation Bank	\$ 1,257,945	
Three E Two Land Company, LLC	\$ 384,000	
Frances P. Bunnelle Foundation	\$ 2,500	

GRANT AND MATCH - ACTIVITIES, COSTS, AND ACRES	\$3,003,500/ 6931 acres
Fee Acquired	\$ 604,900/ 430 acres
Easements Purchased	\$ 2,387,000/ 6501 acres
Other (Personnel, travel, indirect)	\$ 11,600

**PROPOSAL PURPOSE AND DESCRIPTION:** In coastal SC a diverse set of agencies and NGOs have organized as Task Force groups to advance the goals of the coastal ACJV waterfowl focus areas and establish mutual priorities for land protection and restoration. The unique task force partnerships have protected of 378,000 acres in coastal SC to date. The project area for Coastal SC Focus Areas Protection I encompasses fourteen coastal counties and seven Atlantic Coast Joint Venture's (ACJV) Waterfowl Focus Areas: Southern Lowcountry, ACE Basin, Santee, Lynches and Upper Pee Dee, Upper Waccamaw, Winyah Bay and Little Pee Dee-Lumber River. This proposal advances that work by permanently protecting priority tracts within the coastal SC Waterfowl Focus Areas, consisting of forested palustrine wetlands, tidal freshwater marsh, salt marsh, riverine habitat and associated uplands, including maritime forest, mixed pine hardwood forest, managed pine, and early successional habitat in . This proposal seeks to leverage the Task Force partnerships and private conservation easement lands for three strategic projects: (1) to acquire South Fenwick Island, a culturally and ecologically important sea island in the ACE Basin Focus Area (i.e., Ashepoo-Combahee-Edisto Rivers Basin), for public use and recreation, (2) to acquire a key parcel along the scenic Black River for incorporation into The Nature Conservancy's (TNC) Black River Preserve in the Winyah Bay Focus Area and (3) to place a permanent conservation easement on a large forested wetland property along the Savannah River which contributes to the Savannah River Preserve, a multi-partner source-water protection effort within the watershed within the Southern Lowcountry Focus Area. The proposal significantly contributes to the goals of national and regional bird conservation plans. The project includes four tracts, encompassing 6931 new acres, including 4635 wetland acres and 2296 acres of associated uplands to benefit breeding, migrating, and wintering birds in accordance with the recommendations of South Atlantic Migratory Bird Initiative (SAMBI).

Specifically, grant funds will be used by the South Carolina Department of Natural Resources (SCDNR) to acquire the 399-acre South Fenwick Island tract (Tract 1) (Colleton County) in which NAWCA will acquire an approximately 17% undivided interest in the fee along with funding from the South Carolina Conservation Bank and National Coastal Wetlands Program. Additionally, grant funds will be used by TNC to acquire: (1) a bargain-sale conservation easement on the 1522-acre Heart Stone tract (Tract 2) along the Savannah River (Hampton County) in partnership with the landowners and (2) fee title to the

31-acre B.B. Cox Tract (Tract 3) along the Black River (Georgetown County) within the Winyah Bay Focus Area. The 4979-acre Exley match tract (Tract 4) protects bottomland hardwood forests and associated uplands along the Savannah River (Jasper County) through a bargain-sale conservation easement to TNC within the Southern Lowcountry Focus Area. The 19-acre Dupre Island non-match tract (Tract 5) in the Santee Focus Area will be purchased by US Fish and Wildlife Service (FWS) and incorporated into the Cape Romain National Wildlife Refuge (NWR).

**HABITAT TYPES AND WILDLIFE BENEFITTING:** The expansive complex of estuarine, emergent, and freshwater forested wetlands in coastal SC are among the most diverse and intact wetlands in the southeastern United States and play an important role for many species of migrating birds including waterfowl, waterbirds, shorebirds, wading birds, and landbirds. Priority waterfowl species that will benefit from this project include: American Black Duck, Mottled Duck, Mallard, Northern Pintail, Lesser Scaup, American Wigeon, Ring-necked Duck, Canvasback, Redhead, and Wood Duck. The project will also support neotropical migratory birds during the breeding and migration seasons, such as Swallow-tailed Kite, Prothonotary Warbler, Painted Bunting, Swainson's Warbler, and Wood Thrush. Of 39 species of shorebirds present in the Atlantic Region of North America, 29 of these occur in the project area and depend upon salt marsh habitat and tidal flats such as those found on South Fenwick Island and within Cape Romain NWR as well as emergent freshwater wetlands such as those protected on the Exley tract. Five federally listed species would benefit from the habitats being protected by this project. The project will benefit numerous plants and animals, habitats, water quality and ecological processes that work together to sustain the ecological functions and productivity of coastal SC. Cumulatively, the project tracts protect a variety of wetland habitats including 2621 acres of palustrine forested wetlands comprised of mature freshwater forested wetlands (1885 acres) and scrub shrub freshwater wetlands (736 acres); freshwater emergent wetlands (1874 acres); estuarine wetlands (91 acres); and ponds, open water and riverine habitat (49 acres). These project tracts also protect 2296 acres of diverse upland habitats including managed pine in various stages of succession (1987 acres), maritime forest (166 acres), open habitat (78 acres), mixed pine hardwood and deciduous forests (45 acres), and beach habitat (20 acres).

**PUBLIC BENEFITS/PUBLIC ACCESS:** Funds acquired through this grant will allow SCDNR to purchase South Fenwick Island, a culturally and ecologically important property within the Atlantic Coast Joint Venture's ACE Basin Focus Area and the ACE Basin National Estuarine Research Reserve (NERR). South Fenwick Island will protect threatened maritime forest habitat, interior freshwater wetlands, and surrounding salt marsh wetlands and tidal creeks. The property, accessible by boat, will offer unique recreational opportunities including hunting, camping, salt-water fishing, bird watching, hiking, nature photography, kayaking, and canoeing. Funds also will be used to acquire the BB Cox Tract, a strategic property for inclusion in TNC's Black River Swamp Preserve. The Black River Swamp Preserve is managed to provide public access for compatible recreational uses such as canoeing, kayaking, and bird watching. Additionally, the Exley and Heart Stone project tracts will contribute to the protection of water quality and enhance habitat connectivity along the Savannah River. The Savannah River is the drinking water source for tens of thousands of downstream residents. The non-match Dupree Island, a 19-acre marsh island, will be incorporated into public ownership and management of USFWS's Cape Romain NWR, a 60,000 acre beach and estuarine class-A wilderness refuge.

**NEW PARTNERS:** Frances P. Bunnelle Foundation

**RELATIONSHIP TO PREVIOUSLY FUNDED NAWCA PROPOSALS:**

Over the past ten years, SC partners have exemplified how a diverse set of agencies and NGOs can establish mutual priorities for land protection and restoration. Organized as Task Forces focused on the coastal ACJV waterfowl focus area, Audubon South Carolina, Ducks Unlimited (DU), SCDNR, TNC, and the USFWS have worked together with other partners to protect the most critically-important landscapes for birds and other wildlife. Partners, recipients of the 2014 North American Migratory Bird

Joint Venture Conservation Champions Award, have received \$79 million in federal conservation grant awards, leveraging more than \$365 million from over 450 partners, to conserve over 378,000 acres of important coastal habitats. This project, a collaboration of Task Force partners, complements the growing coastal SC protected landscape and expands public ownership and management.

**Coastal SC Wetlands Partnership I and II (WRF 2014):** A three-phase project to leverage private conservation investments to permanently protect 2688 acres of wetlands and 2595 acres of associated uplands on strategic tracts and to provide public access through fee acquisition on 775 new acres in coastal SC. Project Tracts consist of forested palustrine wetlands, tidal freshwater marsh, salt marsh and associated uplands, including maritime forest, mixed pine hardwood forest, managed pine, and early successional habitat, in coastal South Carolina.

**Santee Delta and Winyah Bay Protection Project I and II (TNC 2011, 2012):** Collectively the first two phases of this proposal were submitted and funded for protection of 3601 acres on three grant tracts and 3119 acres on eight match tracts within the Santee Delta and Winyah Bay drainage basin. The projects enhance habitat connectivity, water quality, and public access to lands in the larger project area.

**South Carolina Lowcountry Wetlands (SCLCW) I, II, III, IV, V (DU 2009, 2011, 2012, 2013) & South Carolina Wetland Landscape (SCWL) I & II (DU 2012 & 2013):** The Phase I proposal funds were used to enhance a managed wetland system at Santee Coastal Reserve for SCDNR adjacent to Cape Romain NWR and USFWS Bonny Hall Unit within the ACE Task Force Area. The Phase II proposal enhanced Bear Island WMA near ACE basin NWR by improving water control, water delivery and management capacity for moist soil plant production on three freshwater impoundments. The Phase III proposal will restore 1,091 acres of managed wetlands on the Ernest F. Hollings ACE Basin Refuge Combahee fields unit adjacent to ACE Basin NWR Bonny Hall Tract (grant tract). Phase IV enhances 90 acres of Caper's Island HP south of Cape Romain NWR.

**ACE Basin: Edisto River Corridor Protection Project: Phase I, II, III, IV, V (Audubon SC, 2007, 2008, 2009, 2010, 2011):** This project is a multi-year project to protect and freshwater, forested and estuarine wetlands and associated uplands in the Edisto River corridor. The project added 4,004 acres to the Audubon Center and Sanctuary at Francis Beidler Forest. Beidler Forest has the distinction of protecting the largest remaining virgin stand of black water cypress and tupelo gum forest in the world, and is a Ramsar Wetland of International Importance. The project protected 15,128 acres, including 8310 acres of wetlands to benefit breeding, migrating and wintering birds while enhancing public use within the ACE Basin and close to the Ernest F. Hollings ACE Basin Refuge boundary.

**Winyah Bay Protection Project: Phases I, II and III (TNC, 2008, 2009, and 2010):** Collectively this three phase programmatic proposal was submitted and funded for protection of 9,551 on 4 grant and 14 match tracts within the Winyah Bay drainage basin. The projects enhance functional habitat connectivity, water quality, and public access to recreational lands in the larger project area. Match tracts, Freeman and Vaughn, will be incorporated into TNC's Black River Preserve along with the Suzie Tyson grant tract from Winyah Bay Protection Project Phase II.

**Coastal Refuges Partnership I and II: (FWS, 2013 and 2014):** These proposals were submitted to leverage private conservation investments to secure funding for key public inholdings and restoration needs within the SC Lowcountry Refuge Complex. These projects contribute significantly to the ACJV goals for the Upper Waccamaw, Santee, and ACE Basin Focus Areas for waterfowl protection.

**THREATS AND SPECIAL CIRCUMSTANCES:** As this nation's 40<sup>th</sup> largest state, South Carolina's population grew 15.3% from 2000 to 2010 with over 50% of the population residing in coastal counties. The state's population is predicted to jump by over 1 million new residents within the next fifteen years. Coastal landscapes are especially vulnerable. This growing pressure places physical demands upon sensitive natural landscapes.

**FINANCIAL PLAN AND WORK PLAN**

**PROPOSAL FINANCIAL PLAN TABLE**

ACTIVITIES	GRANT \$	MATCHING PARTNERS			TOTAL \$	TRACT ID	NON-MATCH \$
		PARTNER NAME	OLD MATCH \$	NEW MATCH \$			
Land Costs: Fee Acquired	\$500,000	SCDNR			\$500,000	1- South Fenwick Island	
Appraisals & Other Acquisition Costs	\$40,500	SCDNR			\$40,500	1- South Fenwick Island	
Land Costs: Easement Acquired	\$384,000	TNC			\$384,000	2-Heart Stone Tract	
Land Costs: Easement Donated		TETLC		\$384,000	\$384,000	2-Heart Stone Tract	
Appraisals & Other Acquisition Costs	\$1,000	TNC			\$1,000	2-Heart Stone Tract	
Non-contract personnel & Travel	\$5,000	TNC			\$5,000	2-Heart Stone Tract	
Land Costs: Fee Acquired	\$54,000	TNC			\$54,000	3- BB Cox Tract	
Appraisals & Other Acquisition Costs	\$10,400	TNC			\$10,400	3- BB Cox Tract	
Non-contract personnel & Travel	\$154	TNC			\$154	3- BB Cox Tract	
Non-contract personnel & Travel		BF		\$2,500	\$2,500	3- BB Cox Tract	
Land Costs: Easement Acquired		TNC	\$359,055		\$359,055	4-Exley Tract	
Land Costs: Easement Acquired		SCCB	\$1,257,945		\$1,257,945	4-Exley Tract	
Appraisal review	\$1,000	TNC			\$1,000	4- Exley Tract	
Land Costs: Fee Purchased		FWS				5 – Dupre Island	\$45,000
<b>TOTAL ACQUIRED</b>	<b>\$996,054</b>		<b>\$1,617,000</b>	<b>\$386,500</b>	<b>\$2,999,554</b>		\$45,000
<b>GRAND TOTAL DIRECT</b>	<b>\$996,054</b>		<b>\$1,617,000</b>	<b>\$386,500</b>	<b>\$2,999,554</b>		\$45,000
<b>TOTAL INDIRECT</b>	<b>\$3,946</b>			<b>\$0</b>	<b>\$3,946</b>		
<b>GRAND TOTAL</b>	<b>\$1,000,000</b>		<b>\$1,617,000</b>	<b>\$386,500</b>	<b>\$3,003,500</b>		\$45,000
US Fish and Wildlife Service (FWS)							\$45,000
South Carolina Conservation Bank (SCCB)			\$1,257,945		\$1,257,945		
Three E Two Land Company, LLC (TETLC)				\$384,000	\$384,000		
The Nature Conservancy (TNC)			\$359,055		\$359,055		
Frances P. Bunnelle Foundation (BF)				\$2,500	\$2,500		

ACTIVITIES	GRANT \$	MATCHING PARTNERS			TOTAL \$	TRACT ID	NON-MATCH \$
		PARTNER NAME	OLD MATCH \$	NEW MATCH \$			
<b>GRAND TOTAL</b>	<b>\$1,000,000</b>	<b>NA</b>	<b>\$1,617,000</b>	<b>\$386,500</b>	<b>\$2,003,500</b>		<b>\$45,000</b>

**Do you need to explain any abbreviations in the Financial Plan Table?** BF represents Frances P. Bunnelle Foundation funds secured through a corporate gift to The Nature Conservancy. TETLC represents the Three E Two Land Company LLC, the entity that holds title to the Heart Stone property.

**If your grant request exceeds \$1,000,000, what is your justification?** NA

**If any match was previously approved by the Council via an Optional Matching Contributions Plan, did you include a copy of the letter approving the Matching Contributions Plan and give the following information: tracts affected, and how much of each partner’s match has been used in previous proposals, how much is being used in this proposal, and how much will remain after the current proposal is funded?** NA

**WORK PLAN**

**TRACT 1- South Fenwick Island**

**OVERALL ACRES AFFECTED:** 399 acres

**TRACT LOCATION:** 80°23'57.99"W, 32°31'16.78"N

**STATE/FEDERAL AGENCIES HOLDING INTERESTS:** South Carolina Department of Natural Resources

**Acreage Summary of Grant/Match Activities on the Tract:**

**Acquisition:** 399                      **Restoration:**                      **Enhancement:**                      **Establishment:**

**Describe all applicable grant/match activities occurring on the tract here:** Grant funds will be paired with additional private, state and federal funds to purchase fee title and support due diligence associated with the 401-acre South Fenwick Island acquisition by SCDNR for incorporation into the ACE Basin National Estuarine Research Reserve. The tract includes an existing dock and associated structures, approximately 2 upland acres, which have been excluded from this proposal resulting in the 399 acreage used throughout the proposal. South Fenwick Island is one of the last undeveloped and unprotected islands in the ACE Basin Focus Area. This property provides permanent protection of threatened maritime forest and estuarine habitat within the ACE Basin Focus Area and ACE Basin National Estuarine Research Reserve. It will create public use and recreational opportunities compatible with NAWCA and NERR purposes. The Nature Conservancy, serving as a third-party cooperative partner for the State, acquired the fee interest in the South Fenwick Island property in December 2014. TNC has agreed to hold title while SCDNR assembles funds to purchase the property for inclusion in the ACE Basin National Estuarine Research Reserve.

**Tract 1 – South Fenwick Island: Acquisition Financial Plan Justification - \$540,500 and 399 acres  
**Grant - \$540,500      Match - \$ \_\_\_\_\_      Non-Match - \$ \_\_\_\_\_      Completion: December 2017****

**LAND ACQUISITION DISCLOSURE**

**Type of acquisition:** fee title

**Holder of Fee Title:** SCDNR

**Holder of NAWCA conservation interest:** SCDNR

**Grantor/Seller of conservation interest:** The Nature Conservancy

**Tenure of conservation interest:** Perpetuity

**All funding sources for acquisition:** NAWCA grant funds will be paired with additional private, state and federal funds, including South Carolina Conservation bank and National Coastal Wetlands Conservation Program,

to purchase fee title and support due diligence associated with the 401-acre South Fenwick Island acquisition by SCDNR.

**Are mineral rights severed or included?** Mineral rights are included.

**Are water rights severed or included?** In SC, water rights are appurtenant to the land. Water rights will remain the property of the fee title holder, South Carolina Department of Natural Resources after acquisition.

Easements: N/A

Leases: N/A

Item & Work	Units	\$/unit	Total \$	Schedule (month, year)	Funding Source (Grant or Partner name)
<b>APPRAISALS and OTHER ACQUISITION COSTS</b>					
Land Costs			\$ 500,000	December 2017	Grant
Yellow-book appraisal	1	\$ 7,500	\$ 7,500	August 2017	Grant
Phase I Environmental	1	\$ 2,500	\$ 2,500	August 2017	Grant
Survey	1	\$28,000	\$ 28,000	October 2017	Grant
Closing and title work	1	\$ 2,500	\$ 2,500	December 2017	Grant
Subtotal Appraisals and Other Acquisition Costs					\$40,500
<b>TOTAL ACQUISITION DIRECT COSTS</b>					<b>\$540,500</b>

**TRACT 2- Heart Stone Tract**

**OVERALL ACRES AFFECTED: 1522 acres**

**TRACT LOCATION: 81°23'12.581"W 32°41'1.343"N**

**STATE/FEDERAL AGENCIES HOLDING INTERESTS: NA**

**Acreeage Summary of Grant/Match Activities on the Tract:**

**Acquisition: 1522      Restoration:      Enhancement:      Establishment:**

**Describe all applicable grant/match activities occurring on the tract here:** Grant funds will be used to purchase a bargain-sale conservation easement and support due diligence associated with the acquisition of the 1538-acre Heart Stone Tract by TNC by December 2015 with funding from NAWCA and a significant donation of value from the private landowners, the Elliott Family. A preliminary appraisal shows the estimated value of the CE to be \$770,000. A portion of the estimated landowner donated value, \$384,000, is committed as match to this proposal while the remaining \$386,000 will be committed as future match in a Matching Contribution Plan included in this proposal. The property is referred to throughout this document by its ownership entity, Three E Two Land Company, LLC. A total of 16 acres was deducted from the tract to account for building allowances, resulting in 1522 acres for this proposal. This tract provides permanent protection of bottomland hardwood forest along the Savannah River in Hampton County and will provide public benefit by directly contributing to the Savannah River Clean Water Protection Program.

**Tract 2 – Heart Stone Tract: Acquisition Financial Plan Justification - \$775,349 and 1522 acres**  
**Grant - \$391,349      Match - \$384,000      Non-Match - \$\_\_\_\_\_      Completion: December 2015**

LAND ACQUISITION DISCLOSURE

**Type of acquisition:** conservation easement

**Holder of Fee Title:** Three E Two Land Company (TETLC)

**Holder of NAWCA conservation interest:** The Nature Conservancy

**Grantor/Seller of conservation interest:** Three E Two Land Company (TETLC)

**Tenure of conservation interest:** Perpetuity

**All funding sources for acquisition:** NAWCA grant funds will be used to purchase a bargain-sale conservation easement on the Heart Stone property. The remaining CE value will be donated by the landowners, Three E Two Land Company.

**Are mineral rights severed or included?** Mineral rights are included.

**Are water rights severed or included?** In SC, water rights are appurtenant to the land. Water rights will remain the property of the fee title holder, Three E Two Land Company.

**EASEMENT:**

**What organization will monitor the easement?** The Nature Conservancy

**Should the easement holder cease to exist, to what organization will the easement revert?** Easements may be assigned to a tax-exempt, non-profit organization, qualified under SS501(c)(3) and 170(h)(3) and not a private foundation under S509(a) of the Code, that has a mission of protecting open lands or natural resources in South Carolina Lowcountry.

**Has the easement holder adopted the “Land Trust Standards and Practices” developed by the Land Trust Alliance?** Yes.

**Is there a stewardship endowment dedicated to maintaining and managing the easement?** Yes, a stewardship endowment will be requested of the landowners.

**Is subdivision of the easement property permitted?** Yes, a maximum of 3 parcels can be created.

**List all other allowed activities, allowed structures, or reserved rights not described above.**

**Allowed Activities:** Limited agriculture and grazing in upland areas, harvest of timber outside of the designated forested wetland buffer, recreational uses such as hunting, fishing, and horseback riding , management of wetland impoundments and ponds, the right to conduct archeological investigation, and the right to engage in ecosystem services credits.

**Allowed Structures:** Within a designated 5 acre building envelope, the grantor has the right to construct 1 residence and related outbuildings (e.g. barn, pole shed) per subdivision on each of three allowed parcels. Currently, there is only a single pole shed on the property. The grantor may construct driveways and access roads of permeable materials. The building envelopes shall be built only in upland areas and be setback a minimum of 100 feet from roads, 300 feet from the Savannah River, and 50 feet from all wetlands. Landowner has the right to build a single dock on the Savannah River.

**Reserved Rights:** The grantor has the right to maintain existing improvements; graze and pasture domestic animals in existing and permitted fields so long as grazing would not result in unreasonable deterioration of conservation values; right to create new agricultural fields or wildlife food plots provided the aggregate does not exceed 384 acres; right to harvest timber pursuant to a Forest Management Plan approved by TNC except in a 300 foot no-cut river buffer; right to engage in recreational uses such as hunting, fishing, and horseback riding for commercial purposes; right to restore and enhance native plant and wildlife; maintain, enhance, and manage existing wetland impoundments; maintain, enhance, and manage existing ponds and establish new ponds up to 50 acres in aggregate; the right to conduct archeological investigation; and the right to engage in ecosystem services credits.

Item & Work	Units	\$/unit	Total \$	Schedule (month, year)	Funding Source (Grant or Partner name)
<b>APPRAISALS and OTHER ACQUISITION COSTS</b>					
Purchased Easement		\$384,000	\$384,000	December 2015	Grant
Donated Easement Value		\$384,000	\$384,000	December 2015	Three E Two Land Company, LLC
Appraisal Review	1	\$ 1,000	\$ 1,000	December 2015	Grant
Subtotal Appraisals and Other Acquisition Costs					\$769,000
<b>NON-CONTRACT PERSONNEL and TRAVEL</b>					
Land protection staff time: acquisition of grant tract, coordinating due diligence required, conducting state and federal compliance activities (*hourly rate includes 40% fringe benefits)	100 hours	\$50*/100	\$ 5,000	Ongoing March 1, 2015 to end of project	Grant
Subtotal Non-Contract Personnel and Travel					\$5,000
<b>TOTAL ACQUISITION DIRECT COSTS</b>					<b>\$774,000</b>

**Tract 2 – Heart Stone Tract: Indirect Costs Budget Justification - \$ 1,349**  
**Grant - \$1,349      Match - \$0      Non-match \$ \_\_\_\_\_**

Allowable Category from I.C Rate Agreement	Specific Budget Line Items to Which Indirect Cost is Applied	Direct Cost Base Amount	Approved Rate (%)*/ Agreement Date	Partner to which I.C. Rate Applies	I.C. Grant Amount	I.C. Match Amount	Total Indirect Cost
Total Direct Project Costs	Appraisal Review	\$1,000	22.48%	TNC	\$225		\$225
Total Direct Project Costs	Non-contract personnel	\$5,000	22.48%	TNC	\$1,124		\$1,124

**TRACT 3: BB Cox Tract**

**OVERALL ACRES AFFECTED: 31 acres**

**TRACT LOCATION 33°28'24.52"N 79°29'20.29"W**

**STATE/FEDERAL AGENCIES HOLDING INTERESTS: N/A**

**Acreage Summary of Grant/Match Activities on the Tract:**

**Acquisition: 31      Restoration:      Enhancement:      Establishment:**

**Describe all applicable grant/match activities occurring on the tract here:** Grant and match funds will be used to acquire 31 acres of mature palustrine forested wetland within the Winyah Bay Focus Area and for inclusion in the ownership and management of TNC’s Black River Preserve. The property is adjacent to TNC’s current preserve ownership and this addition will enhance both functional connectivity and management on the Preserve. The corridor has been designated a Scenic River by the Department of Natural Resources and is a locally prized fishing, birding, and kayaking destination. In addition to meeting habitat, scenic, freshwater and recreational priorities for the local community, this expansion project will serve to mitigate for the loss of protected freshwater forested wetlands closer to the coast which are vulnerable to conversion as a result of sea-level rise and salinity intrusion. The property is currently privately owned and unavailable to the public.

**Tract 3– BB Cox Tract: Acquisition Budget Justification - \$69,426 and 31 acres**  
**Grant - \$66,926    Match - \$2,500    Non-Match - \$ \_\_\_\_\_    Completion: December 2015**

**LAND ACQUISITION DISCLOSURE**

**Type of acquisition:** Fee title.

**Holder of NAWCA conservation interest:** The Nature Conservancy

**Grantor/Seller of conservation interest:** B.B. Cox

**Tenure of conservation interest:** Perpetuity

**All funding sources for acquisition:** Frances P. Bunnelle Foundation and Grant Funds

**Are mineral rights severed or included?** Mineral rights are included.

**Are water rights severed or included?** In SC, water rights are appurtenant to the land. Water rights will remain the property of the fee title holder, The Nature Conservancy after acquisition.

Item & Work	Units	\$/unit	Total \$	Schedule (month, year)	Funding Source (Grant or Partner name)
<b>APPRAISALS and OTHER ACQUISITION COSTS</b>					
Land Costs		\$54,000	\$54,000	December 2015	Grant
Appraisal and Appraisal review	1	\$ 6,000	\$ 6,000	August 2015	Grant
Phase I Environmental	1	\$ 2,400	\$ 2,400	August 2015	Grant

Closing and title work,	1	\$ 2,000	\$ 2,000	December 2015	Grant
Subtotal Appraisals and Other Acquisition Costs			\$64,400		
<b>NON-CONTRACT PERSONNEL and TRAVEL</b>					
Land protection staff time: acquisition of grant tract, coordinating due diligence required, conducting state and federal compliance activities (hourly rate includes 40% fringe benefits)	50 hours	\$50*/50	\$ 2,500	Ongoing March 2015 to end of project	Frances P. Bunnelle Foundation
Project manager travel	275 miles	\$.56	\$ 154	Ongoing March 2015 to end of project	Grant
Subtotal Non-Contract Personnel and Travel			\$2,654		
<b>TOTAL ACQUISITION DIRECT COSTS</b>			<b>\$67,054</b>		

**Tract 3 - BB Cox Tract: Indirect Costs Budget Justification - \$2,372**  
**Grant \$2,372 Match \$0 Non-match \$\_\_\_\_\_**

Allowable Category from I.C Rate Agreement	Specific Budget Line Items to Which Indirect Cost is Applied	Direct Cost Base Amount	Approved Rate (%)*/ Agreement Date	Partner to which I.C. Rate Applies	I.C. Grant Amount	I.C. Match Amount	Total Indirect Cost
Total Direct Project Costs	Appraisals and Other Acquisition Costs	\$10,400	22.48%	TNC	\$2,338		\$2,338
Total Direct Project Costs	Non-contract personnel	\$2,500	0%	TNC		\$0	\$0
Total Direct Project Costs	Non-contract personnel travel	\$154	22.48%	TNC	\$34		\$34

**TRACT 4 – Exley Tract**

**OVERALL ACRES AFFECTED: 4979 acres**

**TRACT LOCATION: 81°8'8.052"W 32°23'27.189"N**

**STATE/FEDERAL AGENCIES HOLDING INTERESTS: NA**

**Acreage Summary of Grant/Match Activities on the Tract:**

**Acquisition: 4979 Restoration: Enhancement: Establishment:**

**Describe all applicable grant/match activities occurring on the tract here:** Match funds were generated through the bargain-sale of a conservation easement on the 5032-acre Exley Tract to TNC in December 2013. SCCB funds (\$1,257,945) were used to purchase the bargain-sale easement and are included as match in this proposal. The landowner contributed the remainder of the CE value of \$2,894,055 through a donation to The Nature Conservancy which will be divided with \$359,055 committed to this proposal and \$2,535,000 committed to a Matching Contribution Plan included in this proposal for future projects within the Coastal SC Focus Areas Protection I area. A total of 53 acres was deducted from the tract acreage to account for building allowances resulting in the 4979 acre total used for this proposal. This tract protects forested wetlands and associated uplands. Conservation easement allowances and reserved rights limit subdivision and significantly limit development. Grant funds will pay for an appraisal review on the Exley Tract to fulfill grant guidelines on eligible match.

**Tract 4 – Exley Tract: Acquisition Financial Plan Justification - \$1,618,225 and 4979 acres**  
**Grant - \$1,225 Match - \$ 1,617,000 Non-Match - \$\_\_\_\_\_ Completion: December 2013**

**LAND ACQUISITION DISCLOSURE**

**Type of acquisition:** conservation easement

**Holder of Fee Title:** Thomas L. Exley, Sr, and Thomas L. Exley, Jr

**Holder of NAWCA conservation interest:** The Nature Conservancy

**Grantor/Seller of conservation interest:** Thomas L. Exley, Sr, and Thomas L. Exley, Jr

**Tenure of conservation interest:** Perpetuity

**All funding sources for acquisition:** SCCB grant funds were used to purchase a bargain-sale conservation easement on the Exley property. The remaining CE value was donated by the landowners, Thomas L. Exley, Sr, and Thomas L. Exley, Jr.

**Are mineral rights severed or included?** Mineral rights are included.

**Are water rights severed or included?** In SC, water rights are appurtenant to the land. Water rights will remain the property of the fee title holder(s), Thomas L. Exley, Sr, and Thomas L. Exley, Jr.

EASEMENT:

**What organization will monitor the easement?** The Nature Conservancy

**Should the easement holder cease to exist, to what organization will the easement revert?** Easements may be assigned to a tax-exempt, non-profit organization, qualified under SS501(c)(3) and 170(h)(3) and not a private foundation under S509(a) of the Code, that has a mission of protecting open lands or natural resources in South Carolina Lowcountry.

**Has the easement holder adopted the “Land Trust Standards and Practices” developed by the Land Trust Alliance?** Yes

**Is there a stewardship endowment dedicated to maintaining and managing the easement?** Yes

**Is subdivision of the easement property permitted?** Yes, a maximum of 10 parcels can be created.

**List all other allowed activities, allowed structures, or reserved rights not described above.**

**Allowed Activities:** Limited agriculture and grazing, harvest of timber outside of the designated forested wetland buffer and road buffer, recreational uses such as hunting, fishing, and horseback riding for commercial purposes and management of wetland impoundments and ponds, the right to conduct archeological investigation, and the right to engage in ecosystem services credits.

**Allowed Structures:** Within a 5-acre designated building area for each parcel (maximum of 10 parcels), the grantor has the right to construct up to one (1) primary residence and one (1) secondary residence and related outbuildings. Permitted residences will not exceed 5,000 square feet. The grantor may construct driveways and access roads out of permeable material. The building envelope and ancillary structures shall be setback a minimum of 100 feet from roads, 300 feet from the Savannah River, and 150 feet from Coleman and Fox lakes. The grantor can construct 3 docks.

**Reserved Rights:** The grantor has the right to maintain existing improvements; graze and pasture domestic animals in existing and permitted fields so long as grazing would not result in unreasonable deterioration of conservation values; right to create new agricultural fields and pastures, provided the aggregate does not exceed 600 acres; right to harvest timber pursuant to a Forest Management Plan approved by TNC; right to engage in recreational uses such as hunting, fishing, and horseback riding; right to maintain wildlife through maintenance of existing plots and the establishment of new wildlife food plots up to 4 acres in size; right to restore and enhance native plant and wildlife; maintain, enhance, and manage existing wetland impoundments; maintain, enhance, and manage existing ponds and establish new ponds up to 20 acres in aggregate, create greentree reservoirs up to 250 acres in aggregate; the right to conduct archeological investigation; and the right to engage in ecosystem services credits.

Item & Work	Units	\$/unit	Total \$	Schedule (month, year)	Funding Source
<b>APPRAISALS and OTHER ACQUISITION COSTS</b>					
Appraisal Review	1	\$ 1,000	\$ 1,000	December 2015	Grant
Purchased easement value		\$1,257,945	\$1,257,945	December 2013	SCCB
Donated Easement		\$ 359,055	\$ 359,055	December 2013	TNC
Subtotal Appraisals and Other Acquisition Costs					\$1,618,000
<b>TOTAL ACQUISITION DIRECT COSTS</b>					<b>\$1,618,000</b>

**Tract 4- Exley Tract: Indirect Costs Budget Justification - \$ 225**  
**Grant \$225 Match \$ \_\_\_\_\_ Non-match \$ \_\_\_\_\_**

Allowable Category from I.C Rate Agreement	Specific Budget Line Items to Which Indirect Cost is Applied	Direct Cost Base Amount	Approved Rate (%)*/ Agreement Date	Partner to which I.C. Rate Applies	I.C. Grant Amount	I.C. Match Amount	Total Indirect Cost
Total Direct Project Costs	Appraisals and Other Acquisition Costs	\$1,000	22.48%	TNC	\$225		\$225

**TRACT 5 – Dupre Island**

**OVERALL ACRES AFFECTED: 19 acres**

**TRACT LOCATION: 79° 24' 1.15" W, 33° 5' 47.68"N**

**STATE/FEDERAL AGENCIES HOLDING INTERESTS: Cape Romain National Wildlife Refuge**

**Acres Summary of Grant/Match Activities on the Tract:**

**Acquisition: 19 Restoration: Enhancement: Establishment:**

**Describe all applicable grant/match activities occurring on the tract here:** Non-match funds will be generated through the fee-title purchase by US Fish and Wildlife Service of Dupre Island, a key inholding within Cape Romain National Wildlife Refuge (NWR). This tract protects maritime forest and salt marsh habitat associated with the wilderness designated estuarine complex that comprises Cape Romain NWR. The Nature Conservancy, serving as a third-party cooperative partner for USFWS, acquired the fee interest in Dupre Island property in April 2014. TNC is under contract for the outsale of the property to USFWS. Once acquired, the property will be incorporated into the ownership and management of Cape Romain NWR and will benefit compatible public-use and recreation on the Refuge.

**Tract 5 – Dupre Island: Acquisition Financial Plan Justification - \$45,000 and 19 acres**  
**Grant - \$ \_\_\_\_\_ Match – \$ \_\_\_\_\_ Non-Match - \$45,000 Completion: December 2015**

**LAND ACQUISITION DISCLOSURE**

**Type of acquisition:** fee title

**Holder of Fee Title:** FWS

**Holder of NAWCA conservation interest:** FWS

**Grantor/Seller of conservation interest:** The Nature Conservancy

**Tenure of conservation interest:** Perpetuity

**All funding sources for acquisition:** The fee purchase will be funded by FWS through Land and Water Conservation Funds designated for Cape Romain NWR.

**Are mineral rights severed or included?** Mineral rights are included.

**Are water rights severed or included?** In SC, water rights are appurtenant to the land. Water rights will remain the property of the fee title holder(s), FWS.

*Easements: N/A*

*Leases: N/A*

Item & Work	Units	\$/unit	Total \$	Schedule (month, year)	Funding Source (Grant or Partner name)
<b>APPRAISALS and OTHER ACQUISITION COSTS</b>					
Land Costs			\$45,000	December 2014	FWS
<b>TOTAL ACQUISITION DIRECT COSTS</b>					<b>\$45,000</b>

**TECHNICAL ASSESSMENT QUESTION 1**  
**How does the proposal contribute to the conservation of waterfowl habitat?**

**NARRATIVE**

1. Describe how the proposal will aid in meeting objectives of waterfowl conservation plans.

The Atlantic Coast Joint Venture (ACJV) works to deliver habitat objectives consistent with international, continental and regional plans. The goals and objectives of the ACJV significantly expand those identified in the North American Waterfowl Management Plan. Specifically, the ACJV objectives are to protect, manage, or enhance approximately 879,138 acres of wetland and upland buffer habitats from Maine to South Carolina. In that vein, the Atlantic Coast Joint Venture's Waterfowl Implementation Plan (WIP) lists the nine "focus areas" in South Carolina where emphasis should be placed on waterfowl habitat protection and management. The project boundary for the Coastal SC Focus Areas Protection I proposal encompasses seven of these Waterfowl Focus Areas with specific project tracts in three. Conservation of these tracts will have direct benefits to waterfowl conservation in the region.

Permanent protection of the grant and match tracts will help to meet ACJV habitat objectives as described in the South Atlantic Migratory Bird Initiative. The USFWS recognize a number of wetlands as a priority under the federal Emergency Wetlands Resources Act of 1986 including Savannah River, ACE Basin, Santee River, Upper Winyah Bay and Little Pee Dee River. These areas support some of the largest freshwater marshes left in South Carolina, undisturbed Carolina bays, and undisturbed wilderness of the State Scenic Rivers Program. American Black Duck, Northern Pintail, and Lesser Scaup wintering populations are declining in the area, region, and lower Atlantic Flyway. The size, quality, and juxtaposition of these habitats make them important for these high priority waterfowl.

During 2014, twenty two species of waterfowl were observed during mid-winter surveys within the project area. Coastal South Carolina provides wintering habitat for some of the largest concentrations of waterfowl in the Southeast. During 2014 mid-winter surveys (SCDNR), over 86,900 individuals of twenty two waterfowl species were observed during coast-wide surveys including many high and moderate priority species – American Black Duck, Mottled Duck, Mallard, Northern Pintail, Lesser Scaup, American Wigeon, Ring-necked Duck, Canvasback, Redhead, and Wood Duck. Additionally, the project area provides breeding, migration, and wintering habitat for tens of thousands of Wood Duck and the southern-most wintering populations of Lesser Snow Goose.

The Fenwick Island project tracts are located within the ACE Basin Focus Area which annually hosts peak migratory wintering waterfowl populations of up to 20,000-40,000 birds of several priority species - American Black Duck, Northern Pintail, and Mallard. Also, the extensive protection of bottomland hardwood forests in the Savannah and Winyah Bay drainages provides habitat for thousands of Wood Ducks annually. The Pee Dee and Black River drainages were one of the last areas to consistently winter American Black Ducks in South Carolina and the area was identified in the 1970's as important wintering habitat for protection within the Black Duck Management Plan.

ACJV Focus Area Plans:

This project cumulatively will protect 2621 acres of mature and scrub-shrub palustrine forested wetland, 91 acres of salt marsh, 1874 acres of freshwater tidal marsh, and 49 acres of ponds, riverine habitat and open water. These wetlands provide important breeding, wintering and migration habitat for priority species of waterfowl within three coastal South Carolina ACJV Waterfowl Focus Areas and contributes to individual focus area goals for Southern Lowcountry (4457 acres), Winyah Bay (27 acres), ACE Basin (151 acres). The project meets specific wetland habitat protection goals for waterfowl plans including the North American Waterfowl Management Plan's goal of 945,000 wetland acres - this project contributes 4635 wetland acres. Two project tracts, Exley and Heart Stone, meet a specific recommendation within the ACJV Focus Area Reports by protecting wetlands along river corridors through conservation easements on private lands.

2. For the species listed above, describe how many individuals/pairs will use the proposal area before and after the proposal is completed and for what life cycle stage(s) after the proposal is completed.

	Species	Breeding		Migration		Wintering	
		Before	After	Before	After	Before	After
High Priority	American Black Duck	-	-	R	R	R	R
	Mottled Duck	R	R	R	R	R	R
	Lesser Scaup	-	-	R	R	R	R
	Northern Pintail	-	-	C	C	C	C
	Mallard	-	-	C	C	C	C
Priority	American Wigeon	-	-	C	C	C	C
	Ring-necked Duck	-	-	A	A	A	A
	Canvasback	-	-	R	R	R	R
	Redhead	-	-	R	R	R	R
	Wood Duck	A	A	A	A	A	A
Other	Gadwall	-	-	C	C	C	C
	Hooded Merganser	-	-	C	C	C	C
	Common Merganser	-	-	R	R	R	R
	Red-breasted Merganser	-	-	R	R	R	R
	Bufflehead	-	-	R	R	R	R
	Green-winged Teal	-	-	A	A	A	A
	Blue-winged Teal	-	-	C	C	C	C
	Northern Shoveler	-	-	C	C	C	C
	Ruddy Duck	-	-	C	C	C	C
	Lesser Snow Goose	-	-	R	R	R	R
	Canada Goose	-	-	R	R	R	R
	Tundra Swan	-	-	R	R	R	R

3. How will the proposal impact species affected and improve habitat quality (describe before- and after-proposal environment)?

The SC coastal plain plays an important role for many species of migrating waterfowl by having some of the most extensive, intact wetlands in the southeastern United States. Priority waterfowl species that will benefit from this project include: Northern Pintail, Mottled Duck/American Black Duck, Mallard, Lesser Scaup, Ring-necked Duck, Redhead, American Wigeon, Canvasback, and Wood Duck. The complex of wetland habitats on match and acquisition tracts and their juxtaposition to major waterfowl wintering areas, such as the ACE Basin and Winyah Bay, will benefit twenty priority and non-priority breeding, wintering and migratory waterfowl species. The project tracts will contribute substantively to expansion of the existing protected matrix of public and privately managed waterfowl habitat and the impressive collaborative efforts of the coastal SC waterfowl Task Force groups. Collective benefits to waterfowl from this proposal with those of previous wetland conservation efforts in the SC Coastal Plain include: protection of critical habitat, enhanced collaborative management effort, and protection from human disturbance.

4. What is the importance of each tract or logical groupings of tracts shown in the proposal to the species (if tracts are not yet identified, explain what procedure will be used to ensure that high quality habitat is targeted)?

This proposal will protect 1885 acres of mature palustrine forested wetlands and 1874 acres of emergent wetlands found on all project tracts and important for migratory, wintering, and resident waterfowl described above.

=====

**TECHNICAL ASSESSMENT QUESTION 2**

**How does the proposal contribute to the conservation of other wetland-associated migratory birds?**

A. NAWCA Priority Bird Species for BCR 27

Species/Plan	Numbers Affected	Benefits of Project	Tract Importance

Swallow-tailed Kite  (BCR 27, PIF, SAMBI high priority)	9.4 breeding pairs  (based on extrapolation of PIF objective for STKI 100,000 acres required for 500 breeding pairs)	Protects 1878 acres of mature palustrine forested wetlands improving habitat connectivity and quality of large forested wetland sites. Protects important river corridors and contributes to state population goal of 300 breeding pairs.	<u>2, 3, 4</u> : All tracts, except S. Fenwick Island, provide forested wetlands important for nesting and foraging kites. These project tracts fall within a known nesting, foraging, and pre-migration staging areas with numerous Citizen-Science for Swallow-tailed Kite sightings.
Bald Eagle (BCR 27, SAMBI moderate priority)	Up to 28 pairs could benefit from protection with population increases (based on average territory size of 247 acres).	Protects 4635 acres of palustrine forested wetlands, salt marsh, open water and emergent wetlands and 2296 acres of adjacent uplands. All match and grant tracts have forested habitat near water with minimal or no human development and thus fit the nesting and foraging habitat criteria of Bald Eagles.	<u>1, 2, 3, 4</u> : All tracts provide forested wetlands, salt marsh, and/or adjacent uplands important for nesting and contribute to water quality in adjacent foraging areas including the Savannah, Santee estuarine complex, and Black Rivers.
American Woodcock (BRC 27, SAMBI highest priority)	16 individuals  (Based on estimate of 1 wintering bird(s) per 165.5 acres)	Protects 2621 acres of palustrine forested wetlands, which are important feeding areas for wintering American Woodcock.	<u>1, 2, 3, 4</u> : All project tracts provide forested wetland foraging areas for wintering and migrating American Woodcock.
Swainson's Warbler (BCR 27, SAMBI high priority)	264 breeding pairs (based on average territory size of 24.7 acres)	Preferred habitat is forested wetland patches surrounded by pine dominated forests found on the 6532 acres of mature bottomland hardwood forest and associated uplands.	<u>2, 3, 4</u> : Heart Stone, Exley, and BB Cox Tracts provide the wetland and upland habitat complex preferred by breeding and migrating Swainson's Warblers.
Wood Thrush (BRC 27, SAMBI high priority)	623 breeding pairs  (based on average territory size of 3.36 acre in mature hardwood forests)	Protects 1885 acres of mature palustrine forested wetlands and 211 acres of upland hardwood forest which are important nesting and feeding areas.	<u>1, 2, 3, 4</u> : All project tracts provide mature forested wetlands and/or upland hardwood forest which are important nesting and feeding areas for breeding and migrating Wood Thrush.
Prothonotary Warbler  (BCR 27, SAMBI high priority)	515-1587 breeding pairs (based on average territory size of 1.2 – 3.7 acres)	Protects 1878 acres of mature palustrine forested wetlands which are important nesting and feeding areas for these wood warblers during migration and breeding seasons.	<u>2, 3, 4</u> : All project tracts, except S. Fenwick Island, provide mature forested wetlands important nesting and feeding areas for breeding and migrating Kentucky Warblers and Prothonotary Warblers.
Kentucky Warbler (BCR 27, SAMBI high priority)	346 breeding pairs (based on average territory size of 5.5 acres)		
Painted Bunting (BCR 27, SAMBI highest)	36 breeding pairs (based on average	Protects 177 acres of maritime forest habitat which is	<u>1</u> : Grant tract S. Fenwick Island, provides rare maritime forest habitat for Painted

priority species)	territory size of 4.84 acres)	preferred nesting and foraging habitat for Painted Bunting.	Buntings during breeding season, post-fledging period, and migration.
Rusty Blackbird (BCR 27, SAMBI high priority species)	122 wintering individuals (based on wintering density of 1 individual per 36.5 acres)	Protects 4441 acres of palustrine forested and freshwater emergent wetlands which are important feeding and roosting areas.	<u>2, 3, 4:</u> All project tracts, except S. Fenwick Island, provide mature forested wetlands and/or freshwater emergent wetlands important as feeding and roosting areas for migrating and wintering Rusty Blackbirds.
Red-headed Woodpecker (BCR 27)	330-912 breeding pairs (based on size of summer territories 7.6–21 acres in Florida)	Protects 6931 acres early successional and forested habitat complexes, which is important nesting and foraging habitat for Red-headed Woodpeckers.	<u>1, 2,3,4:</u> All project tracts provide a complex of mature and early successional habitats preferred by Red-headed Woodpeckers during breeding season. These tracts provide deciduous woodlands, forested wetlands with snag trees, burned areas and recent clearings, or farmland with scattered trees. During the breeding season Red-headed Woodpeckers move from forest interiors to forest edges or disturbed areas to nest and forage.

#### **B. OTHER WETLAND-ASSOCIATED BIRD SPECIES**

Identify up to ten non-priority wetland-associated bird species that help demonstrate the benefits of the project activities to non-waterfowl species.

<b>Species/Plan</b>	<b>Numbers Affected</b>	<b>Benefits of Project</b>	<b>Tract Importance</b>
White Ibis (SAMBI high priority)	416 (breeding pairs (based on density of 1 pair per 6.3 acres of forested wetlands)	Protects 2621 acres forested wetlands and 1874 acres of freshwater emergent wetlands, which are important feeding and nesting areas for wading birds.	<u>1,2,3,4:</u> All project tracts provide foraging and/or nesting habitat important for breeding, migrating, and wintering White Ibis, Tricolored Heron, and Little Blue Heron.
Tricolored Heron (SAMBI high priority)	53 breeding pairs (based on density of 1 pair per 49 acres)		
Saltmarsh Sharp-tailed Sparrow (SAMBI highest priority, BCR 27)	Not available	Protects 91 acres of salt marsh in the ACE Basin NERR which is important for Saltmarsh Sparrows and Seaside Sparrows.	<u>1:</u> Grant tract, S. Fenwick Island, provides 91 acres of tidal salt marsh used as foraging and wintering habitat by Saltmarsh Sparrow and foraging, breeding and wintering habitat by resident Seaside Sparrows.
Seaside Sparrow (SAMBI high priority, BCR	10 breeding pairs (based on one pair per 8.89 acres in FL)		

Hooded Warbler (SAMBI moderate priority)	3799 breeding pairs (based on average territory size of 0.69 ha in California)	Protects 2621 acres of palustrine forested wetlands which are important nesting and feeding areas for migratory and breeding wood warblers.	<u>1, 2, 3, 4</u> : All project tracts provide forested wetlands or upland hardwood forest which are important nesting and feeding areas for breeding and migrating Hooded Warbler, Northern Parula, and Black-throated Green Warbler.
Northern Parula (SAMBI moderate priority)	3,318-6,720 breeding pairs (based on average territory size of 0.39-0.79 acres)		
Black-throated Green Warbler (SAMBI highest priority)	437 breeding pairs (based on density of average territory size of 6 acres)		
Black Skimmer (BCR 27, SAMBI high priority)	Not available	Protects 91 acres of salt marsh and mud flats in the ACE Basin NERR which are important foraging habitat for shorebirds.	<u>1</u> : Grant tract, S. Fenwick Island, provides 91 acres of tidal salt marsh used as foraging, breeding, and wintering habitat by Black Skimmer, Short-billed Dowitcher, Gull-billed Terns, and Oystercatchers.
American Oystercatcher (BCR 27, SAMBI high priority)	Not available		
Gull-billed Tern (BCR 27, SAMBI priority)	Not available		
Short-billed Dowitcher (BCR 27, SAMBI high priority)	Not available		

**TECHNICAL ASSESSMENT QUESTION 3**

**How does the proposal location relate to the geographic priority wetlands described by the North American Waterfowl Management Plan, Partners In Flight, the U.S. Shorebird Conservation Plan, and/or the North American Waterbird Conservation Plan?**

**A. NATIONAL PRIORITY WETLAND AREAS.** The Coastal SC Wetland Partnership project area falls within the geographic priority areas for all four major bird groups: waterfowl, shorebirds, landbirds, and waterbirds.

National Bird Plan Priority Areas:	In	Partially In	Out
NAWMP	X		
PIF	X		
Wading Birds	X		
Shorebirds	X		

The **North American Waterfowl Management Plan** is administered by the North American Waterfowl Management Plan Committee. In the United States, the Plan has become a network of Joint Ventures with a variety of federal, state, and private partners. This proposal will aid in meeting the Atlantic Coast Joint Venture habitat objectives to protect/secure more acreage of important waterfowl habitat. The stated goal is 945,000 acres in the Atlantic Coast Joint Venture area, and this proposal contributes 2621 acres of forested and scrub shrub wetlands and 1874 of emergent wetlands that are used by priority waterfowl species. The project protects important breeding habitat for Wood Ducks as well as stopover habitat for migrating waterfowl and other wetland-associated bird species. Specifically, this proposal benefits ten “High Priority” and “Priority” waterfowl species: American Black Duck, Mottled Duck, Mallard, Northern Pintail, Lesser Scaup, Wood Duck, Ring-necked Duck, Redhead, and Canvasback, and American Wigeon. Furthermore, the project protects important wintering habitat for ten other waterfowl including Gadwall, Hooded Merganser, Common

Merganser, Red-breasted Merganser, Bufflehead, Green-winged Teal, Blue-winged Teal, Northern Shoveler, Ruddy Duck, Canada Goose, Tundra Swam and Lesser Snow Goose.

**The North American Waterbird Conservation Plan.** This Plan sets forth priorities and goals for waterbirds in habitats in North America used by waterbird populations. The purpose is to sustain or restore the distribution, diversity, and abundance of populations and habitats of breeding, migratory, and non-breeding waterbirds. The protection of the project tracts contributes directly to the goal of protecting, restoring, and managing sufficient high quality habitat and key sites for waterbirds to meet species and population goals by providing protection of 2621 acres of freshwater forested and scrub shrub wetlands which are important nesting, foraging, and roosting habitat of waterbirds. The protection of grant and match tracts, Exley and Heart Stone, includes a significant upland buffer, which will help protect water quality in the Savannah River watershed. Priority species that use forested wetlands for foraging include Wood Stork, White Ibis, Tricolored Heron, Little Blue Heron, Yellow-crowned Night-Heron, and Black-crowned Night-Heron.

The purpose of the **Partners in Flight Bird (PIF) Conservation Plan** is to provide an overview of the highest priority landbirds in North America. **PIF's Bird Conservation Plan for the South Atlantic Coastal Plain** (Physiographic Area 03), identifies primary conservation objectives This proposal addresses two: (1) maintain and improve habitat quality of large contiguous forested-wetland sites for Swallow-tailed Kites, Wayne's Black-throated Green Warbler, and Swainson's Warbler – this proposal contributes 2621 acres of forested wetlands and three of the project tracts along the Black and Savannah River fall within an important nesting, foraging, pre-migration staging areas for Swallow-tailed Kites, and (2) protect 100% of remaining maritime forest – this proposal protects and places into public management 166 acres of maritime forest on S. Fenwick Island which is important to priority species such as Painted Bunting and Common Ground Dove. Additionally, recent radar studies in the Southeastern US (LaPuma et al.), demonstrate the importance of protecting forested wetlands as stop-over habitat for many migratory landbirds, including those not associated with this habitat type during the breeding season. Migrating landbird densities were associated with habitat type, proximity to the coast, and age and heterogeneity of forested wetlands. The Savannah River floodplain, including the Heart Stone and Exley tracts, is revealed as critical stop-over habitat for migrating landbirds in LaPuma's "Radar Analysis of Bird Migration Stopover Sites in the Southeastern U.S."

**The U.S. Shorebird Conservation Plan** is a partnership of state and federal agencies, non-government organizations, academic institutions, and individuals. The purpose of the Plan is to ensure that stable and self-sustaining populations of all shorebird species are restored and protected. On a national scale, the goal of the Shorebird Plan is to stabilize populations of all shorebird species known or suspected of being in decline due to limiting factors occurring within the U.S., while ensuring that common species are also protected from future threats. All project tracts contribute to protection of upstream freshwater resources improves water quality and ensures high-quality foraging in the down-river estuarine zone used by shorebirds. One coastal grant tract, S. Fenwick Island, is an inholding in ACE Basin NERR, a priority area for shorebirds. Protection of Fenwick Island also contributes to the recent **Atlantic Flyway Shorebird Business Strategy** by protecting shorebird foraging and nesting habitat within a critical shorebird conservation area. S. Fenwick Island will protect 91 acres of estuarine habitat with associated salt marsh and mudflats which will serve as foraging habitat for many shorebird species. Property provides natural habitat associated with St. Helena Estuary including South Atlantic Inland Maritime Forest, a globally imperiled natural community, beach habitat and tidal salt marsh and includes 2.12 miles of salt marsh and bluff frontage along adjacent creeks within the ACE Basin NERR. Priority shorebird species (BCR 27) found in the ACE Basin include Whimbrel, Long-billed Curlew, Red Knot, Least Tern, Gull-billed Tern, Semipalmated Sandpiper, Short-billed Dowitcher.

## **B. REGIONAL IMPORTANT WETLAND AREAS.**

The Coastal SC Focus Areas Protection I falls **within all four of the SAMBI bird focus areas for waterfowl, shorebirds, landbirds, and waterbirds.** The USFWS recognizes a number of wetlands as a priority under the federal Emergency Wetlands Resources Act of 1986 including Savannah, ACE Basin, Santee River, Upper Winyah Bay and Little Pee Dee River. These areas support some of the largest freshwater marshes, undisturbed Carolina Bays, and celebrated wilderness areas as acknowledged by the State Scenic Rivers Program and the National Wild and Scenic River Program.

The Project meets specific objectives listed in the SAMBI Implementation Plan, which has adopted the Southeastern Coastal Plain Bird Conservation Region (BCR 27) of the North American Bird Conservation Initiative. Specifically, the proposal represents a large and unique partnership for landscape-scale conservation, which is supported in the 2011/12

Update to the North American Waterfowl Management Plan and the 2006 SAMBI Implementation Plan including:

1. *Increase quality and availability of stopover habitat for migratory landbird species.* This project proposes to permanently protect four tracts with high quality stop-over habitat, including forested wetlands, maritime forest, open and early-successional habitat, managed pine, and mixed hardwoods. Recent radar data further confirms the importance of forested riparian areas as stop-over habitat for migratory birds such as those found on match and grant tracts, Heart Stone, Exley, and BB Cox Tracts.
2. *Protect remaining forested wetlands.* This project protects and limits disturbance on 1885 acres of mature forested wetlands on all four project tracts. Two of the project tracts along the Savannah River, Heart Stone, and Exley, will limit timber harvest in forested wetlands, increasing the minimum buffer from 100 ft to 300 ft and restricting the size and frequency of harvest within the floodplain forest.

**Relevance to Atlantic Coast Joint Venture Waterfowl Implementation Plan** – The partnerships and scope of this proposal is defined by the goals and boundary of the ACJV Waterfowl Implementation Plan. The project area for this proposal includes seven ACJV focus areas in the South Carolina coastal plain. The purpose of the ACJV Implementation Plan is to “step-down” the objectives of the North American Waterfowl Management Plan to a local level. It presents both assessment of waterfowl and their habitats as well as a description of habitat conservation goals in each focus area. This proposal meets conservation recommendations in the plan by contributing to three individual focus area goals for Southern Lowcountry Focus Area (4457 acres), ACE Basin Focus Area (151 acres), and Winyah Bay Focus Area (27 acres).

**Relevance to Coastal Estuarine Land Conservation Program (CELCP) Plan** -The intent of South Carolina’s Coastal and Estuarine Land Conservation Plan (CELCP) is to provide an opportunity to bring state and/or local governments together with non-governmental organizations and private landowners to achieve the common goal of resource conservation. Furthermore, in South Carolina the CELCP focuses on the eight-county coastal zone boundary that has been designated within the S.C. Coastal Management Act of 1977. The four project tracts within coastal counties demonstrate the following priorities as described in the **South Carolina CELCP Plan**, by (1) protecting properties that provide habitat for state and federally endangered/threatened species; (2) protecting properties that provide dominant and ecologically significant coastal forest types such as alluvial swamp forest; (3) protecting river corridors and associated wetlands, including freshwater wetlands; (4) protecting properties that provide critical linkages between ecologically significant lands, particularly properties that serve as buffers and wildlife corridors; (5) protecting properties that provide critical habitat for migratory bird species; (6) protecting properties within designated priority watersheds that, if protected, will help maintain current water quality standards or prevent future degradation of water resources:

**National Audubon Society Important Bird Areas** -The proposal area includes twenty-four Audubon Important Bird Areas (IBAs). Eleven of these, including the ACE Basin Important Birds Area, are included on the list of 424 global IBAs. Collectively these IBAs protect avian species of global conservation concern, state species of conservation concern, harbor > 1% of a state population, protect species requiring rare/unique habitats, and/or serve as research sites.

**TNC – South Atlantic Coastal Plain Eco-regional Plan** -The proposal area is within TNC’s South Atlantic Coastal Plain Ecoregional Plan’s Southern Lowcountry, ACE Basin, Sewee to Santee and Winyah Bay Project Areas. The proposal contributes to the objectives of the Ecoregional Plan by protecting wetland and wetland-associated upland habitat values critical to the long-term viability of these programs. The project also contributes to the Sewee-Santee-Winyah Estuarine Complex: Marine Conservation Action Plan by minimizing development through acquisition on properties which will protect water quality for the downstream estuarine zone.

**South Carolina Comprehensive Wildlife Conservation Plan (SCCWCP)** -This proposal represents a conservation partnership for landscape-level protection, which is supported in the newly revised 2015 South Carolina Comprehensive Wildlife Conservation Plan. The project specifically addresses four priority statewide conservation actions as described in the 2015 SCCWCP:

1. Acquire property for the protection of priority species and to ensure habitat linkage through fee-simple acquisition and conservation easements covering all priority terrestrial, freshwater aquatic, estuarine, and marine habitats
2. Continue to partner with private entities and other state and federal agencies to acquire land for habitat protection. Develop additional partnerships for land acquisition.
3. Where possible, manage wildlife species and promote habitat protection on an ecoregions-wide and/or watershed-wide scale.

- Continue to partner with private entities, private landowners, and other state and federal agencies to protect riparian areas from degradation.

**TECHNICAL ASSESSMENT QUESTION 4**

**How does the proposal relate to the national status and trends of wetlands types?**

ACTIVITY AND TRACTS IN THE PROPOSAL	STATUS, TYPES, AND ACRES OF WETLANDS Note: Types subsidiary to types listed below have the same status.									UPLANDS	TOTAL
	DECREASING				STABLE			INCREASING	NO TREND DATA		
	PEM	PFO	PSS	E2 Veg	E2AB, E2US	L	R	M2, PAB, PUB/POW, PUS	E1, PML, PRB		
<b>SECTION A</b>											
Fee Acquired	5	34	42	91	0	0	0	3	3	252	430
Easement	1869	1851	694	0	0	0	4	39	0	2044	6501
<b>ACQUIRED TOTAL</b>	1874	1885	736	91	0	0	4	42	3	2296	6931
<b>TYPE TOTALS</b>	1874	1885	736	91	0	0	4	42	3	2296	6931
<b>STATUS TOTALS</b>	4586				4			45		2296	6931
<b>GRAND TOTALS</b>	4635									2296	6931
Tract 1: S. Fenwick Island (grant)	5	7	42	91	0	0	0	3	3	248	399
Tract 2: Heart Stone Tract(grant)	5	983	42	0	0	0	2	19	0	471	1522
Tract 3: BB Cox Tract (old match)	0	27	0	0	0	0	0	0	0	4	31
Tract 4 Exley Tract (old match)	1864	868	652	0	0	0	2	20	0	1573	4979

Provide a brief narrative to describe upland habitats (e.g., cropland, grassland, forest) and the relationship to wetlands and migratory bird conservation (i.e., reason for including in proposal).

These project tracts also protect 2296 acres of diverse upland habitats including 1987 acres of managed pine in various stages of succession, 166 acres of maritime forest, 78 acres of open habitat, 45 acres of mixed pine hardwood and deciduous forests, and 20 acres of beach. Maritime forest is a globally threatened upland forest type supporting 87 bird species of landbirds within the SC coastal landscape. Additionally, the upland habitat associated with the wetland complexes of the Savannah River and Winyah Bay drainage serves as an extremely important buffer to these wetland systems. This upland area is the most likely location for residential, commercial and industrial development that would be devastating to the wetland and other associated natural communities. These uplands also buffer the adjacent high quality palustrine forested wetlands from incompatible land use and protect water quality in the extensive forested wetlands system.

- Maritime forest habitat on S. Fenwick Island provides important breeding habitat for priority species including Chuck-will’s-widow, Eastern Wood-Pewee, Yellow-throated Warbler, Northern Parula, Hooded Warbler, Painted Bunting, Common Ground-Dove and Summer Tanager.
- Mixed hardwoods and managed pine forest on Exley and Heart Stone tracts provide important breeding habitat for priority species such as Bachman’s Sparrow, Northern Bobwhite, Chuck-will’s-widow, Eastern Wood-Pewee, Brown-headed Nuthatch, Prairie Warbler, Pine Warbler, Yellow-throated Warbler, Summer Tanager, and Eastern Towhee.
- Early-successional habitat on Exley and Heart Stone tracts provide habitat for a similar suit of grassland and scrub-shrub associated species including Northern Bobwhite, Loggerhead Shrike, Prairie Warbler, Painted Bunting, Common Yellowthroat, Yellow-breasted Chat, and American Kestrel. Also, many neotropical migratory birds that depend on forested habitat during the breeding season utilize early-successional and open areas as stopover habitat during migration. Both Exley and Heart Stone landowners current do or will engage in timber harvest pursuant to an approved Forest Management Plan by TNC. Limited, continued harvest on these easement properties will allow the persistence of ephemeral early-successional habitat.

4. Open fields on Heart Stone and Fenwick provide important foraging habitat for priority species such as Northern Bobwhite, American Kestrel, Swallow-tailed Kite, Mississippi Kite, Common Ground-Dove, Loggerhead Shrike, Indigo Bunting, Painted Bunting, Eastern Meadowlark, Bobolink, Field Sparrow, and Eastern Towhee. Agricultural allowances within Exley and Heart Stone conservation easements allows for open fields on these properties.

**TECHNICAL ASSESSMENT QUESTION 5**

**How does the proposal contribute to long-term conservation of wetlands and associated habitats?**

ACTIVITY	ACRES BY LONGEVITY OF BENEFITS				TOTAL ACRES
	* Includes water control structures made of material other than wood. ** Includes wood water control structures and pumps.				
	PERPETUITY	*26-99	**10-25	< 10	
<b>SECTION A</b>					
Fee	430				430
Easement	6501				6501
<b>TOTAL ACQUIRED</b>	<b>6931</b>				<b>6931</b>
<b>TOTAL</b>	<b>6931</b>				<b>6931</b>
<b>SECTION B</b>					
Tract 1: S. Fenwick Island (grant)	399				399
Tract 2: Heart Stone Tract (grant)	1522				1522
Tract 3: BB Cox Tract (old match)	31				31
Tract 4 Exley Tract (old match)	4979				4979
<b>TOTAL ACQUIRED</b>	<b>6931</b>				<b>6931</b>

The project area’s tidal freshwater wetlands are some of the most diverse found in North America and offer important habitats for migratory birds, fish, and resident wildlife. Significant private land trust investment in conservation has protected 468,754 acres within the proposed project area. Protection of S. Fenwick Island and three tracts along the Black and Savannah Rivers complements the extensive protected estuarine wetlands (more than 30,000 acres) encompassed by the Belle Baruch Institute for Marine Biology and Coastal Research, North Inlet and Winyah Bay NERR, Santee Coastal Reserve, Tom Yawkey Wildlife Center Heritage Preserve, CRNWR, ACE Basin NERR and private properties previously protected by conservation easements.

Land trusts such as The Nature Conservancy, Lowcountry Open Land Trust, Ducks Unlimited and others have been working in the South Lowcountry for several decades. While a land ethic is still strong and enduring throughout the region, not all landowners are in a financial position to donate a conservation easement to protect their land and water for future generations. Given the constraints on funding and the desire to ensure a continuation of historical land uses in private ownership, the SOLO Task Force and private landowners have spearheaded an innovative effort that matches interested landowners with limited funding to achieve the Savannah River Preserve (SRP) Program, the highest leveraged, most geographically encompassing and most significant public/private conservation initiative in South Carolina. The Heart Stone tract is a critical part of the *Savannah River Preserve Program*, which has received tremendous public support as well as funding from the SC Conservation Bank. A primary focus of the SRP Program is to protect water quality in the Savannah River, the drinking water source for thousands of SC residents. This is one of the last unprotected tracts along the Savannah River and remains vulnerable to incompatible development.

Additionally within the project area, The Nature Conservancy, USFWS, and NOAA Coastal Services Center, and USGS Water Science Center, are also working together to identify freshwater habitats for protection along river corridors which will allow for upslope and inland migration of wetland habitats as sea-levels rise and saltwater moves inland, an important climate adaptation strategy to insure the future of waterfowl habitat.

---

---

## TECHNICAL ASSESSMENT QUESTION 6

### **How does the proposal contribute to the conservation of habitat for wetland associated federally listed or proposed endangered species; wetland associated state-listed species; and other wetland-associated fish and wildlife that are specifically involved with the proposal?**

The Coastal SC Wetlands Partnership II will contribute to habitat conservation for four federally listed species and six (6) state listed species.

#### **A. Federally Threatened, Endangered or Proposed candidate species:**

**Wood Stork – Threatened.** South Carolina and southern North Carolina are the northern most extent of the Wood Stork's range. During 2014, storks nested in the following counties within the project boundary for Coastal SC Focus Areas Protection: Beaufort (9 colonies), Charleston (5 colonies), Colleton (3 colonies), Georgetown (2 colonies), Hampton (1 colony), Horry (1 colony), and Jasper (1 colony). Wood storks may travel up to 60-80 km to forage and the project hosts a significant rookery of 150 Wood Storks on the Black River close to the BB Cox Tract. Additionally, 24 Wood Storks were seen foraging in open habitat on S. Fenwick Island in April 2014. Contiguous mature blocks of wetlands provide suitable habitat for Wood Storks to nest, forage, and roost. The US Fish and Wildlife Service (USFWS) Southeast Wood Stork Recovery Plan cites the value of coastal wetlands in South Carolina to Wood Storks and calls for identification of and protection from threats to crucial foraging habitat. Protection of critical habitats through the donation of conservation easements is specifically cited in the USFWS Wood Stork Conservation and Management Manual for Landowners.

**Shortnose sturgeon – Endangered.** Shortnose sturgeon is a federally endangered species that uses the bottomland swamps within the Savannah and Winyah drainage for spawning. The USFWS shortnose sturgeon Recovery Plan identifies pollution and environmental contaminants as factors limiting recovery of the species. As the shortnose sturgeon relies heavily on benthic macro invertebrates as a food source, protection of water quality is critical to maintaining adequate food resources required by the sturgeon. Accordingly, protection of forested and tidal freshwater wetlands as outlined in this proposal contributes to the maintenance of the ecological integrity of the Savannah and Winyah Bay drainage system supporting significant shortnose sturgeon habitat. Habitat conservation along the Black River and Coosawatchie River Basins will enhance long-term water quality benefiting shortnose and Atlantic sturgeon on approximately 10.25 miles of riparian habitat along those rivers.

**Florida Manatee – Endangered.** Florida manatees are migratory in South Carolina beginning their slow migration up the South Carolina coast each spring when water temperatures rise into the upper 60s. Since active surveillance was initiated in 1993, more than 1,000 manatee sightings have been reported in South Carolina. They can be found in tidal rivers, estuaries and near-shore marine waters, such as those found on S. Fenwick Island, throughout the Carolinas during the summer months. Protection of S. Fenwick Island and freshwater projects along the Savannah River, Exley and Heart Stone, helps to meet conservation objectives for Manatee by protecting the quality of wetlands in South Carolina thereby reducing harmful algal blooms and nutrient loading of coastal water bodies through best management practices and land use. Additionally, S. Fenwick Island provides high-quality tidal creeks and estuarine habitat used by Manatee for foraging during their north-bound migration into SC coastal areas.

**Pondberry – Endangered.** Pondberry is found in Arkansas, Missouri, Mississippi and in North Carolina, South Carolina and Georgia. The species inhabits pond margins, swampy depressions, sandy sinks, and seasonally flooded wetlands. In South Carolina, pondberry grows along the margins of limestone sinks and shallow depressions. The plant also inhabits pinelands and recently burned open areas. The seasonally flooded wetlands along the Black and Savannah Rivers contain potential habitat for the endangered pondberry.

**Atlantic sturgeon – Endangered.** Atlantic sturgeon is federally endangered species that uses the bottomland swamps within the Savannah and Winyah drainage for spawning. This species, a close relative of the endangered shortnose sturgeon, uses the bottomland swamps within the Savannah and Winyah drainage for spawning. Because the species are closely related, pollution and environmental contaminants also pose a significant threat to the species. Accordingly, protection of forested and tidal freshwater wetlands as outlined in this proposal contributes to the maintenance of the ecological integrity of the Savannah and Winyah Bay drainage system supporting significant Atlantic sturgeon habitat.

Habitat conservation Black River and Coosawatchie River Basins will enhance long-term water quality benefiting shortnose and Atlantic sturgeon on approximately 10.25 miles of riparian habitat along those rivers.

**B. State-listed endangered or threatened species (not included above):**

**Whether the completed proposal will relieve the need for any special protective status for the species:** No

The following five (5) wildlife species are listed as endangered, threatened, or of special concern by the State of South Carolina. Grant and match tracts provide potential or known habitat for these species (South Carolina Natural Heritage Program 2007):

State Endangered: Rafinesque's big-eared bat, southern myotis, Bald Eagle

State Threatened: Spotted turtle, Swallow-tailed Kite

**How many individuals/pairs will use the proposal area and for what life cycle stage and whether this is an improvement in population numbers over the current situation:**

**Rafinesque's big-eared bat and southern myotis**, -Although exact population numbers are unknown, Rafinesque's big-eared bat and southern myotis use mature palustrine forested wetlands within the project area for roost and nesting sites and foraging habitat. Large tracts of mature forests that contain multiple pockets of trees with large diameter basal cavities, interspersed with mosaic of different aged forests that will provide future roosts, are essential for the viability of these two species. The Exley, Heart Stone, and BB Cox tracts provide a mix of mature condition with relatively young forested wetland habitat that could be ideal for these species particularly as portions of the forested tracts move into old-growth condition.

**Swallow-tailed Kite** - The Savannah River and the Black River-Mingo Creek are considered two of the most important Swallow-tailed Kite nesting areas in South Carolina. SC DNR estimates approximately 60 nesting pairs use the Winyah drainage which is approximately 30% of the breeding pair estimate in South Carolina. Three match and grant tracts, Exley, Heart Stone, and BB Cox, are within known nesting, foraging, or pre-migration staging areas for Swallow-tailed Kites. The Savannah River wetlands and upland open habitat, such as those found on Exley and Heart Stone Properties are particularly important staging areas for kites with some of the largest foraging aggregates recorded in South Carolina at the end of the breeding season.

**Bald Eagle** - The proposal area supports several active Bald Eagle nesting territories. Although delisted from the Federal Endangered Species List, the eagle is still protected under the USFWS Southeast Region Bald Eagle Recovery Plan as well as being listed as state endangered in South Carolina. The plan states that protecting feeding, nesting and other support habitat for nesting and non-nesting adults, subadults, and immature eagles as being essential to the recovery of the species. This proposal will protect valuable wintering and known breeding habitat for the species.

**Spotted Turtle** - Although specific population numbers of the spotted turtle are not known, the turtle is recognized as common to abundant within the Winyah drainage. The BB Cox Tract within the Winyah drainage will contribute to improved water quality and habitat condition for the Spotted Turtle.

**How proposal will improve habitat quality (describe the before- and after-proposal environment):**

Habitat protection activities outlined in the proposal will further protect the project area from residential and commercial development as well as incompatible forest management practices including harvesting of large, hollow trees and conversion to pine monoculture. The 2621 acres of palustrine forested wetlands protected will contribute substantively to the conservation of these wetland types and will mitigate for future losses of forested freshwater wetlands in the Savannah and Winyah drainages due to sea level rise.

**Whether proposed actions and proposal area are identified in a recovery plan or other species plan:**

All of the above state-listed endangered, threatened and of concern species have been identified by SC DNR's Heritage Trust Program as species whose respective habitats are in critical need of conservation and appropriate management. Thus, SC DNR has identified the ACE Basin, Savannah and Winyah drainages as priority landscapes for large-scale habitat protection initiatives involving collaborative public and private partnerships.

**Whether the completed proposal will relieve the need for any special protective status for the species:** No

**Other wetland-dependent fish and wildlife species and narrative:**

The projects wetlands and associated uplands support rich herpetofauna and one of the highest concentrations of American Alligators in South Carolina. Additionally, over 60 species of interjurisdictional fish depend on the proposal area’s estuarine wetlands and creeks as critical nursery ground habitat.

**Marine Fishes and Invertebrates:** The estuarine habitats within the project area provide habitat for 39 species of marine/estuarine fish and 51 marine invertebrates listed in South Carolina’s State Wildlife Action Plan (SWAP) as priority species. Tidal creeks and salt marshes in and around S. Fenwick Island are ideal spawning and nursery areas for these important fisheries and invertebrates.

**Anadromous and Freshwater Fishes:** The project area supports several rare anadromous and freshwater fishes including American eel, American shad, and blueback herring. Freshwater fish of conservation concern documented in the project area include the endemic broadtail madtom, thinlip chub, and banded killifish. The project area also supports three native catfish species, the white catfish, flat bullhead, and snail bullhead. These species have been significantly reduced in much of their range by invasive flathead catfish predation.

**Freshwater Mussels:** The project area also provides significant riparian habitat to reaches of the Santee, Pee Dee, Waccamaw, and Black Rivers that support four globally imperiled freshwater mussel species (Waccamaw spike; Roanoke Slabshell; Yellow lampmussel; Rayed pink fatmucket) and several reproducing populations of the tidewater mucket, a mussel species which is critically endangered in the southern part of its range. The project area also supports large reproducing populations of Eastern pond mussel, a species ranked G4 globally, but one that ranks no higher than S3 in its resident states. This species has experienced significant declines in the Great Lakes states and other parts of its northern range.

**Freshwater Crayfish:** The project area supports several species of freshwater crayfish of conservation concern globally and in South Carolina. The Pee Dee lotic crayfish is a South Carolina endemic species that also uses small tributary habitats. Other species include the Sandhills crayfish, Coastal Plain crayfish, and Santee crayfish.

The protection of the match and grant tracts support the objectives of the DNR Wildlife Conservation Strategy, which identifies the species of highest priority for conservation in South Carolina. This project will support 39 Highest Priority species, 19 High Priority Species and 36 species of Moderate Priority.

=====

**TECHNICAL ASSESSMENT QUESTION 7**

**How does the proposal satisfy the partnership purpose of the North American Wetlands Conservation Act?**

**A. Ratio of the Non-Federal Match to the Grant Request:** 2.003:1

**B. 10% Matching Partners:** South Carolina Conservation Bank, The Nature Conservancy, private landowners

**C. Partner Categories (includes non-match)**

**Non-governmental conservation organizations:** TNC

**State agencies:** South Carolina Conservation Bank

**Federal agencies:** US Fish and Wildlife Service

**Private landowner:** Elliott Family (Three E Two Land Company, LLC)

**Corporate:** Frances P. Bunnelle Foundation (new partner)

**Other partner groups:**

**D. Important Partnership Aspects (new grant recipient, significant new partners, unique partners, large numbers of partners under any category in C. above, non-financial contributions):**

Over the past ten years, partners in South Carolina have exemplified how a diverse set of agencies and NGOs can establish mutual priorities for land protection and restoration. Organized as Task Forces focused on the coastal ACJV waterfowl focus area, Audubon South Carolina, Ducks Unlimited (DU), SCDNR, TNC, and the USFWS have worked together—and engaged many more partners—to protect the most critically-important landscapes for birds and other wildlife. Partners, recipients of the 2014 North American Migratory Bird Joint Venture Conservation Champions Award, have received \$79 million in federal conservation grant awards, leveraging more than \$365 million from over 450

partners, to conserve over 378,000 acres of important coastal habitats. This proposal brings together private and public partners represented in the Southern Lowcountry, ACE Basin, Santee River, Upper Waccamaw, and Winyah Bay Task Forces as partners: including USFWS Cape Romain NWR (non-match), private landowners, SCDNR and TNC. Perhaps, most unique is the Savannah River Preserve Conservation Program, a highly leveraged conservation easement program to promote water-quality along the Savannah River, which was structured and is administered by the Southern Lowcountry task force

**Savannah River Preserve Partnership** - Land trusts such as The Nature Conservancy, Lowcountry Open Land Trust, Ducks Unlimited and others have been working in the South Lowcountry Task Force area for several decades. While a land ethic is still strong and enduring throughout the region, not all landowners are in a financial position to donate a conservation easement to protect their land and water for future generations. Given the constraints on funding and the desire to ensure a continuation of historical land uses in private ownership, the SOLO Task Force and private landowners have spearheaded an innovative that matches interested landowners with limited funding to achieve the Savannah River Preserve (SRP) Program, the highest leveraged, most geographically encompassing and most significant public/private conservation initiative in South Carolina targeted specifically to protect water quality and freshwater resources within a critical coastal watershed.

**Frances P. Bunnelle Foundation** – Frances P. Bunnelle Foundation will provide support for SC TNC staff time associated with preparing due diligence and negotiating the purchase of the BB Cox Tract for inclusion in SC TNC’s Black River Preserve. This support is part of a gift from Frances P. Bunnelle Foundation to SC TNC for conservation work in Georgetown County. Frances P. Bunnelle Foundation LLC is a new NAWCA partner.

**Cape Romain NWRs** – Non-match tract, Dupre Island, is a key inholding in Cape Romain NWR. USFWS is uniquely qualified to manage this marsh island as part of the Refuge which targets shorebird conservation and estuarine habitat protection as part of its purpose. Cape Romain NWR will also provide a significant non-match contribution to secure the Dupre Island tract.

**South Carolina Conservation Bank** - The mission of the SCCB is to improve the quality of life in South Carolina through the conservation of significant natural resource lands, wetlands, historical properties, and archeological sites. Through the 2014 application period, the Conservation Bank had conserved over 198,651 acres including 178,819 acres of forest lands and wetlands, 7,029 acres of urban parks, and 12,802 acres of farm land and historic lands. The SCCB is included as a match partner (old match) for the \$1,257,945 contribution to the protection of the Exley match tract. S. Fenwick Island is also the subject of a pending SCCB application (if successful, the SCCB funds will be used as match for a National Coastal Wetlands Conservation Program grant). The SCCB strongly supports the efforts of the Savannah River Preserve Partnership.

**The Nature Conservancy** - The proposal area is within TNC’s South Atlantic Coastal Plain Ecoregional Plan’s Sewee to Santee and Winyah Bay / Pee Dee River Basin Project Areas. The proposal contributes to the objectives of the Ecoregional Plan by protecting wetland and wetland-associated upland habitat values critical to the long-term viability of these programs. TNC is an active member of the Southern Lowcountry, ACE Basin, Winyah Bay, and Upper Waccamaw Task Forces. TNC holds 154 conservation easements which protect 139,000 acres of habitat in the project boundary. The Nature Conservancy is serving as third-party title holder for the S. Fenwick Island property. TNC has agreed to hold title the property while the SCDNR assembles grant funds to purchase it for inclusion in the ACE Basin NERR. TNC will not profit for the outsale of the property to SCDNR.

**E. Public Access:** Funds acquired through this grant will allow SCDNR to purchase South Fenwick Island, a culturally and ecologically important property within the Atlantic Coast Joint Venture’s ACE Basin Focus Area and the ACE Basin National Estuarine Research Reserve (NERR). South Fenwick Island will protect threatened maritime forest habitat and surrounding salt marsh wetlands. The property, accessible by boat, will offer unique recreational opportunities such as hunting, salt-water fishing, bird watching, hiking, nature photography, kayaking, and canoeing. Additionally, the property is within the Gullah-Geechee Heritage Corridor and is known for its archaeological sites, both Native American and Colonial. Tabby ruins have been found around the island as well as old roads, middens, and historic structures.

Funds will also be used to acquire BB Cox Tract, a strategic property for inclusion in TNC’s Black River Swamp Preserve. The Black River Swamp Preserve is managed to provide public access for compatible recreational uses such as

canoeing, kayaking, and bird watching. Additionally, the Exley and Heart Stone project tracts will contribute to the protection of water quality and enhance functional habitat connectivity along the Savannah River and contribute directly to Savannah River Preserve program designed for source-water protection for downstream communities that depend on surface-water withdrawal for their municipal water supply. The non-match Dupree Island, a 19-acre marsh island, will be incorporated into public ownership and management of USFWS's Cape Romain NWR, a 60,000 acre beach and estuarine class-A wilderness refuge.

---

## ATTACHMENTS

### Tract Table:

Tract ID/ Activity	Wetland Acres	Upland Acres	Riparian Miles	Funding Category	Funding Source	County and State	Central Tract Location in Decimal Degrees	Final Title Holder
Tract 1: S. Fenwick Island (grant)	151	248	2.1	Grant	Grant	Colleton County, SC	80° 23' 57.99''W 32° 31' 16.78''N	Fee = SCDNR
Tract 2: Heart Stone Tract(grant)	1051	471	1.3	Grant/ New Match	Grant/ TETLC	Hampton County, SC	81°23'12.581"W 32°41'1.343"N	Easement= TNC  Fee = Three E Two Land Company, LLC
Tract 3: BB Cox Tract (old match)	27	4	0.0	Grant	Grant/ BF	Georgetown County, SC	79°29'20.29"W 33°28'24.52"N	Fee= TNC
Tract 4 Exley Tract (old match)	3406	1573	4.3	Old Match	TNC/ SCCB	Jasper County, SC	81°8'8.052"W 32°23'27.189"N	Easement= TNC  Fee = Thomas L. Exley, Sr, and Thomas L. Exley, Jr
Tract 5: Dupre Island (non match)				Non Match	FWS	Charleston County, SC	79°24'1.15"W 33° 5'47.68"N	Fee= FWS

### **FINAL TITLEHOLDER SUMMARY:**

Final easement and title holder summary is as follows: (1) fee purchase of 401-acre S Fenwick Island Tract (Tract 1) in Colleton County by SC Department of Natural Resources (SCDNR); (2) bargain-purchase of a conservation easement on 1538-acre Heart Stone Tract (Tract 2) in Jasper County to The Nature Conservancy (TNC) fee title retained by Three E Two Land Company, LLC; (3) fee purchase of 31-acre BB Cox Tract in Georgetown County by The Nature Conservancy (TNC); (4) bargain-purchase of a conservation easement on 5032-acre Exley Tract (Tract 4) in Jasper County to TNC fee title retained by Exley; (5) fee purchase of 19-acre Dupre Island (Tract 5) in Charleston County by US Fish and Wildlife Service.

**Partner Contribution Forms:** See attached

### **Optional Matching Contributions Plan:**

**What is the Match Plan Amount and Purpose?** \$2,921,000 to be applied to TNC and partner Coastal SC NAWCA proposals. The match included in the MCP was/will be generated by the landowner donated share of two conservation easement tracts included in this proposal, Heart Stone Tract (which will close in Dec 2015) and Exley Tract (closed in Dec 2013). This MCP will directly advance the protection priorities of the Task Force partnerships focused on the ACJV Waterfowl Focus Areas in coastal SC. The current proposal advances projects in four of the seven waterfowl focus areas within the project boundary. Future proposals by TNC or our partners using match from the proposed MCP will be approved by the broader Task Force partnerships to advance the shared priorities of the ACJV and the local conservation collaboration of the Task Forces.

**What is the Match Plan Intent?** The South Carolina Chapter of The Nature Conservancy or our partners will submit three more standard NAWCA grant proposals within the defined project area to advance the shared goals and priorities of the Task Force groups within the ACJV Waterfowl Focus Areas.

**What is the Match Plan Need?** The Project strives to build upon wetland protection efforts in coastal waterfowl focus areas. The remaining Phases of the project will also be used to permanently protect strategic tract(s), comprised of palustrine and/or estuarine wetlands, and associated uplands in the SC Lowcountry wetland system thus enhancing functional connectivity, habitat values, of wetlands and public use and recreation opportunities.

**Is there a Match Plan Chart?** See below

**Matching Contributions Plan Chart**

<b>Match Plan Partners</b>	<b>Current Proposal I</b>	<b>Proposal II</b>	<b>Proposal III</b>	<b>Proposal IV</b>	<b>Total \$</b>
The Nature Conservancy (TNC)	\$359,055	\$845,000	\$845,000	\$845,000	\$2,894,055
Three E Two Land Company		\$128,666	\$128,667	\$128,667	\$386,000
<b>Matching Contributions Plan Totals</b>		<b>\$973,666</b>	<b>\$973,667</b>	<b>\$973,667</b>	<b>\$2,921,000</b>

**Standard Form 424 and Assurances B and/or D (NA to U.S. Fish and Wildlife Service applicants)?** See attached

**Maps?** See attached

**EASEMENTS, LEASES, AND INDIRECT COST RATE AGREEMENT**

**Have you included a copy of the following:** Yes

**Copies of easements and leases?** See attached

**Current approved negotiated indirect cost rate agreement or statement that Council Coordinator has a copy?** See attached

**NORTH AMERICAN WETLANDS CONSERVATION ACT PROPOSAL  
PARTNER CONTRIBUTION STATEMENT**

**What is the title of the proposal that you are contributing to?**

Coastal SC Focus Areas Protection I

**What is the name of your organization (private landowners indicate "Private")?**

The Nature Conservancy

**When will you make the contribution?** February 2015

**What is the value of your contribution and how did you determine the value?**

The Nature Conservancy requests that \$359,055 in donated value from the bargain-sale of a conservation easement on 5032-acre Exley Tract in Jasper County be dedicated as match to Coastal SC Focus Areas Protection I. An additional \$2,535,000 in donated value is included in a Matching Contribution Plan request to be preserved as match for future proposals in the project area. For NAWCA's purposes, the tract is cited as 4979 acres in the proposal to account for development allowances and was acquired in December 2013. The value was established by a qualified and competent appraiser who established the fair market value of the conservation easement. The contribution is non-federal in origin.

**Does the contribution have a non-federal origin?** The contribution is non-federal in origin.

**If this is based on a fund-raising event or other future action, if that future action fails, will you still provide the contribution amount?** Not applicable.

**What long-term migratory bird and wetlands conservation work will the contribution cover?**

The Exley Tract contribution is an important component of this proposal which will protect 4979 acres of forested wetlands and associated uplands. The Exley tract within the Southern Lowcountry Focus Area is a high priority for conservation identified by the North American Waterfowl Management Plan Atlantic Coast Joint Venture (NAWMP ACJV). This protected property increases the quality of permanently protected breeding, migration and wintering habitats available to migratory birds in the Atlantic Flyway. Additionally, the Exley tract is a critical part of the *Savannah River Preserve Program*, which has received tremendous public support as well as funding from the SC Conservation Bank. A primary focus of the SRP Program is to protect water quality in the Savannah River, the drinking water source for thousands of SC residents.

**Does the proposal correctly describe your contribution, especially the amount?** Yes

**If applicable to the proposal, is your organization competent to hold title to, and manage, land acquired with grant funds and are you willing to apply a Notice of Grant Agreement or other recordable document to the property?** Yes

**Do you have any additional comments?**

We are pleased to partner with the Coastal SC Focus Areas Protection I and aid in meeting objectives of the NAWMP, the SAMBI and plans for other bird groups and wetland-dependent wildlife, as explained in the proposal. We put this contribution forward to leverage additional coastal wetland protection to meet objectives described in the proposal.

**Signature:**



**Name, Title, and Affiliation:** Mark L. Robertson, South Carolina Executive Director, The Nature Conservancy

**Date Signed:**

2-25-2015

**NORTH AMERICAN WETLANDS CONSERVATION ACT PROPOSAL  
PARTNER CONTRIBUTION STATEMENT**

**What is the title of the proposal that you are contributing to?**

Coastal SC Focus Areas Protection I

**What is the name of your organization (private landowners indicate "Private")?**

USFWS Waccamaw National Wildlife Refuge

**When will you make the contribution?**

This non-match contribution represents funds that will be used by USFWS Cape Romain National Wildlife Refuge to acquire the 19-acre Dupre Island Tract in Spring 2015.

**What is the value of your contribution and how did you determine the value?**

The value of the tract is \$45,000. The value was determined in 2014 by yellow-book appraisal.

**Does the contribution have a non-federal origin?** This contribution is federal non-match.

**If this is based on a fund-raising event or other future action, if that future action fails, will you still provide the contribution amount?** Not applicable.

**What long-term migratory bird and wetlands conservation work will the contribution cover?**

Our contribution is an important component of this proposal which will contribute to protection and stewardship of a 19-acre inland marsh island with estuarine habitat and associated uplands. Dupre Island, within the heart of the Cape Romain Refuge and within the Santee Focus Area is a high priority area identified by the North American Waterfowl Management Plan Atlantic Coast Joint Venture (NAWMP ACJV). This protected property increases the quality of permanently protected breeding, migration and wintering habitats available to migratory birds in the Atlantic Flyway. The non-match Dupree Island will be incorporated into public ownership and management of USFWS's Cape Romain NWR, a 60,000 acre beach and estuarine wilderness refuge. USFWS is uniquely suited to support research and manage threats on Dupre Island wetlands.

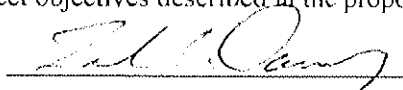
**Does the proposal correctly describe your contribution, especially the amount?** Yes

**If applicable to the proposal, is your organization competent to hold title to, and manage, land acquired with grant funds and are you willing to apply a Notice of Grant Agreement or other recordable document to the property?** Not applicable

**Do you have any additional comments?**

We are pleased to partner with the Coastal SC Focus Areas Protection I and aid in meeting objectives of the NAWMP, the SAMBI and plans for other bird groups and wetland-dependent wildlife, as explained in the proposal. We put this non-matching contribution forward to leverage additional coastal wetland protection to meet objectives described in the proposal.

**Signature:**



**Name, Title, and Affiliation:** Sarah Dawsey, Manager, Cape Romain National Wildlife Refuge

**Date Signed:**

2/4/2015

**NORTH AMERICAN WETLANDS CONSERVATION ACT PROPOSAL  
PARTNER CONTRIBUTION STATEMENT**

**What is the title of the proposal that you are contributing to?**  
Coastal SC Focus Areas Protection I

**What is the name of your organization (private landowners indicate "Private")?**  
South Carolina Conservation Bank

**When will you make the contribution?** February 2015

**What is the value of your contribution and how did you determine the value?**  
South Carolina Conservation Bank requests that \$1,257,945 in value from the bargain-sale purchase of a conservation easement on 5032-acre Exley Tract in Jasper County be dedicated as match to Coastal SC Focus Areas Protection I. For NAWCA's purposes, the tract is cited as 4979 acres in the proposal to account for development allowances and the easement was purchased in December 2013. The value was determined by a qualified and competent appraiser who established the fair market value of the conservation easement.

**Does the contribution have a non-federal origin?** This contribution is federal non-match.

**If this is based on a fund-raising event or other future action, if that future action fails, will you still provide the contribution amount?** Not applicable.

**What long-term migratory bird and wetlands conservation work will the contribution cover?**  
The Exley Tract contribution is an important component of this proposal which will protect 4979 acres of forested wetlands and associated uplands. The Exley tract within the Southern Lowcountry Focus Area is a high priority for conservation identified by the North American Waterfowl Management Plan Atlantic Coast Joint Venture (NAWMP ACJV). This protected property increases the quality of permanently protected breeding, migration and wintering habitats available to migratory birds in the Atlantic Flyway. Additionally, the Exley tract is a critical part of the *Savannah River Preserve Program*, which has received tremendous public support. A primary focus of the SRP Program is to protect water quality in the Savannah River, the drinking water source for thousands of SC residents.

**Does the proposal correctly describe your contribution, especially the amount?** Yes

**If applicable to the proposal, is your organization competent to hold title to, and manage, land acquired with grant funds and are you willing to apply a Notice of Grant Agreement or other recordable document to the property?** Not applicable

**Do you have any additional comments?**  
We are pleased to partner with the Coastal SC Focus Areas Protection I and aid in meeting objectives of the NAWMP, the SAMBI and plans for other bird groups and wetland-dependent wildlife, as explained in the proposal. We put this contribution forward to leverage additional coastal wetland protection to meet objectives described in the proposal.

**Signature:** 

**Name, Title, and Affiliation:** Marvin Davant, Executive Director, South Carolina Conservation Bank

**Date Signed:** 2/25/12

**NORTH AMERICAN WETLANDS CONSERVATION ACT PROPOSAL  
PARTNER CONTRIBUTION STATEMENT**

**What is the title of the proposal that you are contributing to?**

Coastal SC Focus Areas Protection I

**What is the name of your organization (private landowners indicate "Private")?**

Private (Three E Two Land Company LLC)

**When will you make the contribution?** December 2015

**What is the value of your contribution and how did you determine the value?**

Three E Two Land Company LLC requests that \$384,000 in donated value from the proposed bargain-sale of a conservation easement on the 1538.7-acre Heart Stone Tract in Hampton County be dedicated as match to Coastal SC Focus Areas Protection I. An additional \$386,000 in donated value is included in a Matching Contribution Plan request to be preserved as match for future proposals in the project area. For NAWCA's purposes, the tract is cited as 1522 acres in the proposal to account for development allowances. The value of the easement \$1,154,000 was established in a draft appraisal (effective date: January 6, 2015) by a qualified and competent appraiser. This project proposes to purchase a bargain-sale conservation easement on the property with \$384,000 in funding from NAWCA while the remaining \$770,000 in donated value will be committed as match to this proposal and future proposals through a matching contribution plan we described above.

**Does the contribution have a non-federal origin?** This contribution is non-federal in origin.

**If this is based on a fund-raising event or other future action, if that future action fails, will you still provide the contribution amount?** Not applicable.

**What long-term migratory bird and wetlands conservation work will the contribution cover?**

The Heart Stone Tract contribution is an important component of this proposal which will protect 1522 acres of forested wetlands and associated uplands. The Heart Stone tract within the Southern Lowcountry Focus Area is a high priority for conservation identified by the North American Waterfowl Management Plan Atlantic Coast Joint Venture (NAWMP ACJV). Once protected, this property will increase the extent of permanently protected breeding, migration and wintering habitats available to migratory birds in the Atlantic Flyway. Additionally, the Heart Stone tract will contribute to the *Savannah River Preserve Program*, which has received tremendous public support as well as funding from the SC Conservation Bank. A primary focus of the SRP Program is to protect water quality in the Savannah River, the drinking water source for thousands of SC residents.

**Does the proposal correctly describe your contribution, especially the amount?** Yes

**If applicable to the proposal, is your organization competent to hold title to, and manage, land acquired with grant funds and are you willing to apply a Notice of Grant Agreement or other recordable document to the property?** Not applicable

**Do you have any additional comments?**

We are pleased to partner with the Coastal SC Focus Areas Protection I and aid in meeting objectives of the NAWMP, the SAMBI and plans for other bird groups and wetland-dependent wildlife, as explained in the proposal. We put this contribution forward to leverage additional coastal wetland protection to meet objectives described in the proposal.

**Signature:**



**Name, Title, and Affiliation:** Nash Elliott, Manager, Three E Two Land Company LLC

**Date Signed:**

2-18-15



FRANCES P. BUNNELLE  
*foundation*

**NORTH AMERICAN WETLANDS CONSERVATION ACT PROPOSAL  
PARTNER CONTRIBUTION STATEMENT**

**What is the title of the proposal that you are contributing to?**

Coastal SC Focus Areas Protection I

**What is the name of your organization (private landowners indicate "Private")?**

Frances P. Bunnelle Foundation

**When will you make the contribution?** February 2015

**What is the value of your contribution and how did you determine the value?**

The value of our contribution is \$2,500. This amount will be designated for direct cost of staff time spent conducting due diligence and negotiations for the BB Cox acquisition tract to be added to The Nature Conservancy's Black River Preserve.

**Does the contribution have a non-federal origin?** This contribution is non-federal in origin.

**If this is based on a fund-raising event or other future action, if that future action fails, will you still provide the contribution amount?** Not applicable

**What long-term migratory bird and wetlands conservation work will the contribution cover?**

The BB Cox Tract contribution is an important component of this proposal which will protect 31 acres of forested wetlands and associated uplands. The BB Cox tract within the Winyah Bay Focus Area is a priority for conservation identified by the North American Waterfowl Management Plan Atlantic Coast Joint Venture (NAWMP ACJV). This protected property increases the quality of permanently protected breeding, migration and wintering habitats available to migratory birds in the Atlantic Flyway. Additionally, the tract contributes to a key climate adaptation strategy in coastal SC to increase connectivity of protected lands especially along river systems to allow for future habitat migration due to sea-level rise.

**Does the proposal correctly describe your contribution, especially the amount?** Yes

**If applicable to the proposal, is your organization competent to hold title to, and manage, land acquired with grant funds and are you willing to apply a Notice of Grant Agreement or other recordable document to the property?** Not applicable

**Do you have any additional comments?**

We are pleased to partner with the Coastal SC Focus Areas Protection I and aid in meeting objectives of the NAWMP, the SAMBI and plans for other bird groups and wetland-dependent wildlife, as explained in the proposal. We put this contribution forward to leverage additional coastal wetland protection to meet objectives described in the proposal.

**Signature:**

*Geales Sands*

**Name, Title, and Affiliation:** Geales Sands, Executive Director, Frances P. Bunnelle Foundation

**Date Signed:**

*Feb. 26, 2015*



# Grant Application Package

Opportunity Title:	NAWCA-15-U.S. STANDARD GRANTS
Offering Agency:	Fish and Wildlife Service
CFDA Number:	
CFDA Description:	
Opportunity Number:	F15AS00068
Competition ID:	
Opportunity Open Date:	01/13/2015
Opportunity Close Date:	02/27/2015
Agency Contact:	David Buie Wildlife Biologist E-mail: david_buie@fws.gov Phone: 301-497-5870

I will be submitting applications on my behalf, and not on behalf of a company, state, local or tribal government, academia, or other type of organization.

Application Filing Name: THE NATURE CONSERVANCY

## Select Forms to Complete

### Mandatory

[Application for Federal Assistance \(SF-424\)](#)

[Assurances for Non-Construction Programs \(SF-424B\)](#)

[Assurances for Construction Programs \(SF-424D\)](#)

### Optional

## Instructions

[Show Instructions >>](#)

This electronic grants application is intended to be used to apply for the specific Federal funding opportunity referenced here. If the Federal funding opportunity listed is not the opportunity for which you want to apply, close this application package by clicking on the "Cancel" button at the top of this screen. You will then need to locate the correct Federal funding opportunity, download its application and then apply.

Application for Federal Assistance SF-424											
<b>* 1. Type of Submission:</b> <input type="checkbox"/> Preapplication <input checked="" type="checkbox"/> Application <input type="checkbox"/> Changed/Corrected Application			<b>* 2. Type of Application:</b> <input checked="" type="checkbox"/> New <input type="checkbox"/> Continuation <input type="checkbox"/> Revision			<b>* If Revision, select appropriate letter(s):</b> _____ <b>* Other (Specify):</b> _____					
<b>* 3. Date Received:</b> 02/26/2015			<b>4. Applicant Identifier:</b> _____								
<b>5a. Federal Entity Identifier:</b> _____			<b>5b. Federal Award Identifier:</b> _____								
<b>State Use Only:</b>											
<b>6. Date Received by State:</b> _____			<b>7. State Application Identifier:</b> _____								
<b>8. APPLICANT INFORMATION:</b>											
<b>* a. Legal Name:</b> THE NATURE CONSERVANCY											
<b>* b. Employer/Taxpayer Identification Number (EIN/TIN):</b> 53-0242652			<b>* c. Organizational DUNS:</b> 0726566300000								
<b>d. Address:</b>											
<b>* Street1:</b>		4225 N. FAIRFAX DR, STE 100									
<b>Street2:</b>		_____									
<b>* City:</b>		ARLINGTON									
<b>County/Parish:</b>		_____									
<b>* State:</b>		VA: Virginia									
<b>Province:</b>		_____									
<b>* Country:</b>		USA: UNITED STATES									
<b>* Zip / Postal Code:</b>		22203-1637									
<b>e. Organizational Unit:</b>											
<b>Department Name:</b> SOUTH CAROLINA LAND PROTECTION			<b>Division Name:</b> EASTERN DIVISION								
<b>f. Name and contact information of person to be contacted on matters involving this application:</b>											
<b>Prefix:</b>		Dr.		<b>* First Name:</b>		MARIA					
<b>Middle Name:</b>		A.									
<b>* Last Name:</b>		WHITEHEAD									
<b>Suffix:</b>		_____									
<b>Title:</b> PROJECT DIRECTOR, WINYAH BAY AND PEE DEE RIVE											
<b>Organizational Affiliation:</b> THE NATURE CONSERVANCY SOUTH CAROLINA CHAPTER											
<b>* Telephone Number:</b> 843-367-2080			<b>Fax Number:</b> 843-937-6735								
<b>* Email:</b> mwhitehead@tnc.org											

**Application for Federal Assistance SF-424**

**\* 9. Type of Applicant 1: Select Applicant Type:**

M: Nonprofit with 501C3 IRS Status (Other than Institution of Higher Education)

Type of Applicant 2: Select Applicant Type:

Type of Applicant 3: Select Applicant Type:

\* Other (specify):

**\* 10. Name of Federal Agency:**

Fish and Wildlife Service

**11. Catalog of Federal Domestic Assistance Number:**

CFDA Title:

**\* 12. Funding Opportunity Number:**

F15AS00068

\* Title:

NAWCA-15-U.S. STANDARD GRANTS

**13. Competition Identification Number:**

Title:

**14. Areas Affected by Project (Cities, Counties, States, etc.):**

14\_Areas affected by Project.docx

Add Attachment

Delete Attachment

View Attachment

**\* 15. Descriptive Title of Applicant's Project:**

Coastal SC Focus Areas Protection I

Attach supporting documents as specified in agency instructions.

Add Attachments

Delete Attachments

View Attachments

**Application for Federal Assistance SF-424**

**16. Congressional Districts Of:**

\* a. Applicant

\* b. Program/Project

Attach an additional list of Program/Project Congressional Districts if needed.

**17. Proposed Project:**

\* a. Start Date:

\* b. End Date:

**18. Estimated Funding (\$):**

* a. Federal	<input type="text" value="1,000,000.00"/>
* b. Applicant	<input type="text" value="359,055.00"/>
* c. State	<input type="text" value="1,257,945.00"/>
* d. Local	<input type="text" value="0.00"/>
* e. Other	<input type="text" value="386,500.00"/>
* f. Program Income	<input type="text" value="0.00"/>
* g. TOTAL	<input type="text" value="3,003,500.00"/>

**\* 19. Is Application Subject to Review By State Under Executive Order 12372 Process?**

a. This application was made available to the State under the Executive Order 12372 Process for review on

b. Program is subject to E.O. 12372 but has not been selected by the State for review.

c. Program is not covered by E.O. 12372.

**\* 20. Is the Applicant Delinquent On Any Federal Debt? (If "Yes," provide explanation in attachment.)**

Yes  No

If "Yes", provide explanation and attach

21. \*By signing this application, I certify (1) to the statements contained in the list of certifications\*\* and (2) that the statements herein are true, complete and accurate to the best of my knowledge. I also provide the required assurances\*\* and agree to comply with any resulting terms if I accept an award. I am aware that any false, fictitious, or fraudulent statements or claims may subject me to criminal, civil, or administrative penalties. (U.S. Code, Title 218, Section 1001)

\*\* I AGREE

\*\* The list of certifications and assurances, or an internet site where you may obtain this list, is contained in the announcement or agency specific instructions.

**Authorized Representative:**

Prefix:  \* First Name:

Middle Name:

\* Last Name:

Suffix:

\* Title:

\* Telephone Number:  Fax Number:

\* Email:

\* Signature of Authorized Representative:  \* Date Signed:

*for*  
*Mark L. Robertson*

## ASSURANCES - NON-CONSTRUCTION PROGRAMS

Public reporting burden for this collection of information is estimated to average 15 minutes per response, including time for reviewing instructions, searching existing data sources, gathering and maintaining the data needed, and completing and reviewing the collection of information. Send comments regarding the burden estimate or any other aspect of this collection of information, including suggestions for reducing this burden, to the Office of Management and Budget, Paperwork Reduction Project (0348-0040), Washington, DC 20503.

**PLEASE DO NOT RETURN YOUR COMPLETED FORM TO THE OFFICE OF MANAGEMENT AND BUDGET. SEND IT TO THE ADDRESS PROVIDED BY THE SPONSORING AGENCY.**

**NOTE:** Certain of these assurances may not be applicable to your project or program. If you have questions, please contact the awarding agency. Further, certain Federal awarding agencies may require applicants to certify to additional assurances. If such is the case, you will be notified.

As the duly authorized representative of the applicant, I certify that the applicant:

1. Has the legal authority to apply for Federal assistance and the institutional, managerial and financial capability (including funds sufficient to pay the non-Federal share of project cost) to ensure proper planning, management and completion of the project described in this application.
2. Will give the awarding agency, the Comptroller General of the United States and, if appropriate, the State, through any authorized representative, access to and the right to examine all records, books, papers, or documents related to the award; and will establish a proper accounting system in accordance with generally accepted accounting standards or agency directives.
3. Will establish safeguards to prohibit employees from using their positions for a purpose that constitutes or presents the appearance of personal or organizational conflict of interest, or personal gain.
4. Will initiate and complete the work within the applicable time frame after receipt of approval of the awarding agency.
5. Will comply with the Intergovernmental Personnel Act of 1970 (42 U.S.C. §§4728-4763) relating to prescribed standards for merit systems for programs funded under one of the 19 statutes or regulations specified in Appendix A of OPM's Standards for a Merit System of Personnel Administration (5 C.F.R. 900, Subpart F).
6. Will comply with all Federal statutes relating to nondiscrimination. These include but are not limited to: (a) Title VI of the Civil Rights Act of 1964 (P.L. 88-352) which prohibits discrimination on the basis of race, color or national origin; (b) Title IX of the Education Amendments of 1972, as amended (20 U.S.C. §§1681-1683, and 1685-1686), which prohibits discrimination on the basis of sex; (c) Section 504 of the Rehabilitation Act of 1973, as amended (29 U.S.C. §794), which prohibits discrimination on the basis of handicaps; (d) the Age Discrimination Act of 1975, as amended (42 U.S.C. §§6101-6107), which prohibits discrimination on the basis of age; (e) the Drug Abuse Office and Treatment Act of 1972 (P.L. 92-255), as amended, relating to nondiscrimination on the basis of drug abuse; (f) the Comprehensive Alcohol Abuse and Alcoholism Prevention, Treatment and Rehabilitation Act of 1970 (P.L. 91-616), as amended, relating to nondiscrimination on the basis of alcohol abuse or alcoholism; (g) §§523 and 527 of the Public Health Service Act of 1912 (42 U.S.C. §§290 dd-3 and 290 ee-3), as amended, relating to confidentiality of alcohol and drug abuse patient records; (h) Title VIII of the Civil Rights Act of 1968 (42 U.S.C. §§3601 et seq.), as amended, relating to nondiscrimination in the sale, rental or financing of housing; (i) any other nondiscrimination provisions in the specific statute(s) under which application for Federal assistance is being made; and, (j) the requirements of any other nondiscrimination statute(s) which may apply to the application.
7. Will comply, or has already complied, with the requirements of Titles II and III of the Uniform Relocation Assistance and Real Property Acquisition Policies Act of 1970 (P.L. 91-646) which provide for fair and equitable treatment of persons displaced or whose property is acquired as a result of Federal or federally-assisted programs. These requirements apply to all interests in real property acquired for project purposes regardless of Federal participation in purchases.
8. Will comply, as applicable, with provisions of the Hatch Act (5 U.S.C. §§1501-1508 and 7324-7328) which limit the political activities of employees whose principal employment activities are funded in whole or in part with Federal funds.

9. Will comply, as applicable, with the provisions of the Davis-Bacon Act (40 U.S.C. §§276a to 276a-7), the Copeland Act (40 U.S.C. §276c and 18 U.S.C. §874), and the Contract Work Hours and Safety Standards Act (40 U.S.C. §§327-333), regarding labor standards for federally-assisted construction subagreements.
10. Will comply, if applicable, with flood insurance purchase requirements of Section 102(a) of the Flood Disaster Protection Act of 1973 (P.L. 93-234) which requires recipients in a special flood hazard area to participate in the program and to purchase flood insurance if the total cost of insurable construction and acquisition is \$10,000 or more.
11. Will comply with environmental standards which may be prescribed pursuant to the following: (a) institution of environmental quality control measures under the National Environmental Policy Act of 1969 (P.L. 91-190) and Executive Order (EO) 11514; (b) notification of violating facilities pursuant to EO 11738; (c) protection of wetlands pursuant to EO 11990; (d) evaluation of flood hazards in floodplains in accordance with EO 11988; (e) assurance of project consistency with the approved State management program developed under the Coastal Zone Management Act of 1972 (16 U.S.C. §§1451 et seq.); (f) conformity of Federal actions to State (Clean Air) Implementation Plans under Section 176(c) of the Clean Air Act of 1955, as amended (42 U.S.C. §§7401 et seq.); (g) protection of underground sources of drinking water under the Safe Drinking Water Act of 1974, as amended (P.L. 93-523); and, (h) protection of endangered species under the Endangered Species Act of 1973, as amended (P.L. 93-205).
12. Will comply with the Wild and Scenic Rivers Act of 1968 (16 U.S.C. §§1271 et seq.) related to protecting components or potential components of the national wild and scenic rivers system.
13. Will assist the awarding agency in assuring compliance with Section 106 of the National Historic Preservation Act of 1966, as amended (16 U.S.C. §470), EO 11593 (identification and protection of historic properties), and the Archaeological and Historic Preservation Act of 1974 (16 U.S.C. §§469a-1 et seq.).
14. Will comply with P.L. 93-348 regarding the protection of human subjects involved in research, development, and related activities supported by this award of assistance.
15. Will comply with the Laboratory Animal Welfare Act of 1966 (P.L. 89-544, as amended, 7 U.S.C. §§2131 et seq.) pertaining to the care, handling, and treatment of warm blooded animals held for research, teaching, or other activities supported by this award of assistance.
16. Will comply with the Lead-Based Paint Poisoning Prevention Act (42 U.S.C. §§4801 et seq.) which prohibits the use of lead-based paint in construction or rehabilitation of residence structures.
17. Will cause to be performed the required financial and compliance audits in accordance with the Single Audit Act Amendments of 1996 and OMB Circular No. A-133, "Audits of States, Local Governments, and Non-Profit Organizations."
18. Will comply with all applicable requirements of all other Federal laws, executive orders, regulations, and policies governing this program.
19. Will comply with the requirements of Section 106(g) of the Trafficking Victims Protection Act (TVPA) of 2000, as amended (22 U.S.C. 7104) which prohibits grant award recipients or a sub-recipient from (1) Engaging in severe forms of trafficking in persons during the period of time that the award is in effect (2) Procuring a commercial sex act during the period of time that the award is in effect or (3) Using forced labor in the performance of the award or subawards under the award.

SIGNATURE OF AUTHORIZED CERTIFYING OFFICIAL Susanne Holmes <i>for Mark L. Robertson</i>	TITLE SOUTH CAROLINA EXECUTIVE DIRECTOR
APPLICANT ORGANIZATION THE NATURE CONSERVANCY	DATE SUBMITTED 02/26/2015



[Home](#) > [Apply for Grants](#) > Confirmation

## Confirmation

Thank you for submitting your grant application package via Grants.gov. Your application is currently being processed by the Grants.gov system. Once your submission has been processed, Grants.gov will send email messages to advise you of the progress of your application through the system. Over the next 24 to 48 hours, you should receive two emails. The first will confirm receipt of your application by the Grants.gov system, and the second will indicate that the application has either been successfully validated by the system prior to transmission to the grantor agency or has been rejected due to errors.

Please do not hit the back button on your browser.

If your application is successfully validated and subsequently retrieved by the grantor agency from the Grants.gov system, you will receive an additional email. This email may be delivered several days or weeks from the date of submission, depending on when the grantor agency retrieves it.

You may also monitor the processing status of your submission within the Grants.gov system by clicking on the "Track My Application" link listed at the end of this form.

Note: Once the grantor agency has retrieved your application from Grants.gov, you will need to contact them directly for any subsequent status updates. Grants.gov does not participate in making any award decisions.

**IMPORTANT NOTICE:** If you do not receive a receipt confirmation and either a validation confirmation or a rejection email message within 48 hours, please contact us. The Grants.gov Contact Center can be reached by email at [support@grants.gov](mailto:support@grants.gov), or by telephone at 1-800-518-4726. Always include your Grants.gov tracking number in all correspondence. The tracking numbers issued by Grants.gov look like GRANTXXXXXXXXX.

If you have questions please contact the Grants.gov Contact Center: [support@grants.gov](mailto:support@grants.gov)  
1-800-518-4726 24 hours a day, 7 days a week. Closed on federal holidays.

The following application tracking information was generated by the system:

**Grants.gov Tracking Number:** GRANT11848011

**Applicant DUNS:** 07-265-6630

**Submitter's Name:** Susanne Holmes

**CFDA Number:**

**CFDA Description:**

**Funding Opportunity Number:** F15AS00068

**Funding Opportunity Description:** NAWCA-15-U.S. STANDARD GRANTS

**Agency Name:** Fish and Wildlife Service

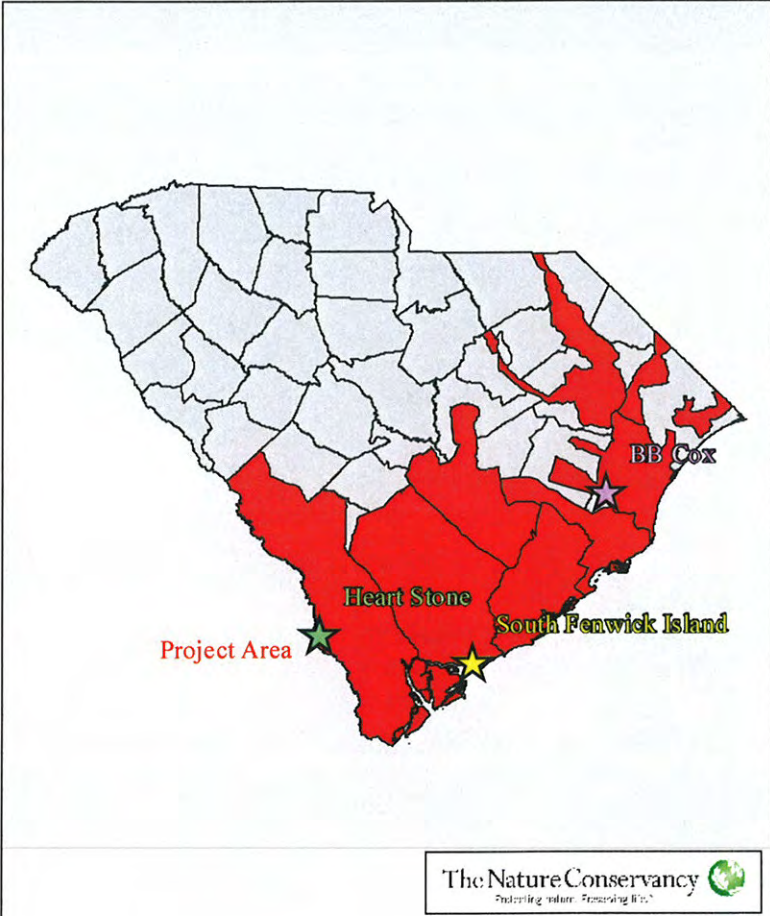
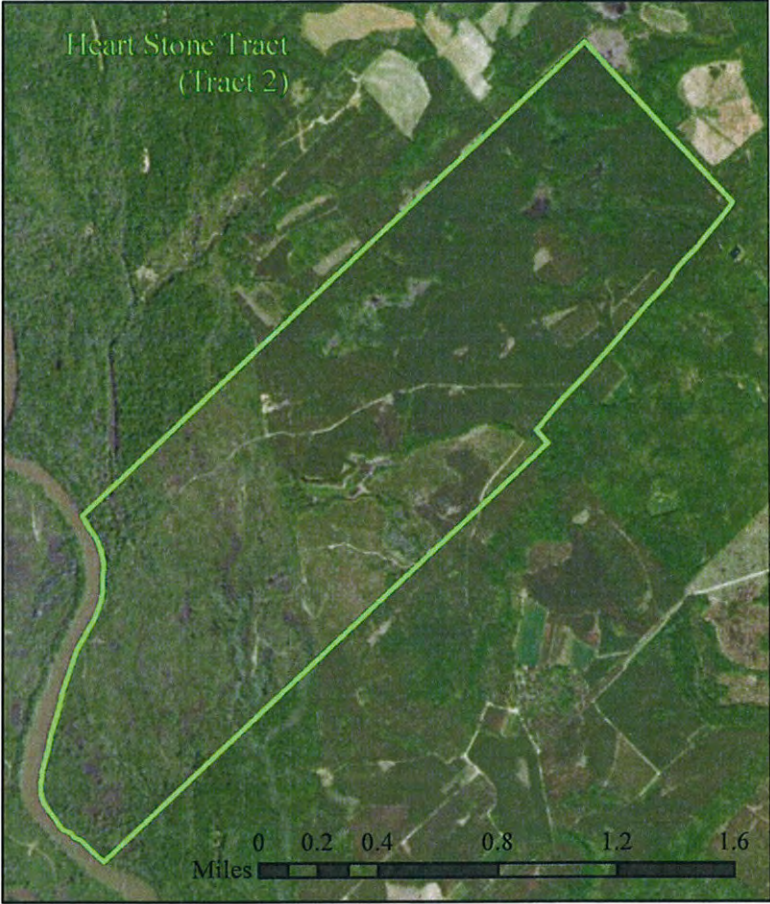
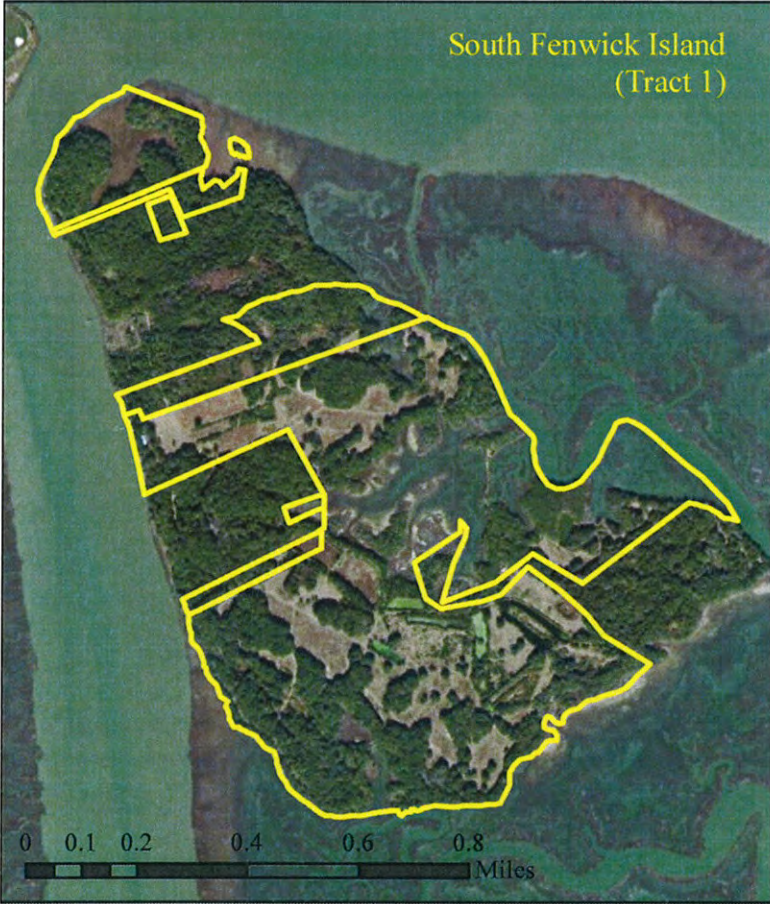
**Application Name of this Submission:** THE NATURE CONSERVANCY

**Date/Time of Receipt:** 2015.02.26 3:27 PM, EST

TRACK MY APPLICATION – To check the status of this application, please click the link below:  
[http://www.grants.gov/web/grants/applicants/track-my-application.html?tracking\\_num=GRANT11848011](http://www.grants.gov/web/grants/applicants/track-my-application.html?tracking_num=GRANT11848011)

It is suggested you Save and/or Print this response for your records.

# North American Wetlands Conservation Act Coastal SC Focus Areas Protection I



# North American Wetlands Conservation Act Coastal SC Focus Areas Protection I

